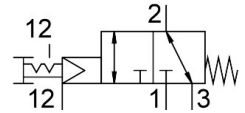


# Pushbutton valve VHEF-PTCZ-B32-N14

Part number: 5299726

FESTO



General operating condition

## Data sheet

Feature	Value
Valve function	3/2, bistable
Actuation type	Manual
Width	20 mm
Normal nominal flow rate (normalized to DIN 1343)	870 l/min
Pneumatic working port	1/4 NPT
Operating pressure	-0.095 MPa ... 1 MPa
Operating pressure	-0.95 bar ... 10 bar
Structural design	Plate seat
Nominal width	6 mm
Exhaust air function	With flow control option
Application note	Operate by hand only
Sealing principle	Soft
Mounting position	Any
Manual override	Detenting
Type of control	Pilot-controlled
Pilot air supply port	External
Flow direction	Reversible
Symbol	00995886
Lap	Zero overlap
Pilot pressure MPa	0.3 MPa ... 1 MPa
Pilot pressure	3 bar ... 10 bar
Pilot pressure psi	43.5 psi ... 145 psi
Max. switching frequency	0.5 Hz
Explosion prevention and protection	Zone 1 (ATEX) Zone 2 (ATEX) Zone 21 (ATEX) Zone 22 (ATEX)
Operating medium	Compressed air as per ISO 8573-1:2010 [7:-:-]
Information on operating and pilot media	Operation with oil lubrication possible (required for further use)
Corrosion resistance class (CRC)	1 - Low corrosion stress
LABS (PWIS) conformity	VDMA24364-B1/B2-L
Temperature of medium	-10 °C ... 60 °C
Ambient temperature	-10 °C ... 60 °C
Actuating force	20 N
Release force	25 N
Product weight	161 g

<b>Feature</b>	<b>Value</b>
Type of mounting	With through-hole
Pilot air port 12/14	M5
Pilot air port 12	M5
Pneumatic connection 1	1/4 NPT
Pneumatic connection 2	1/4 NPT
Pneumatic connection 3	1/4 NPT
Note on materials	RoHS-compliant
Cover material	PA-reinforced
Seals material	NBR
Housing material	Wrought aluminum alloy, anodized