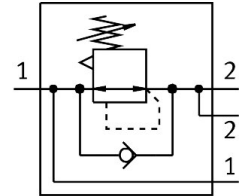


# Pressure regulator MS6-LRB-1/2-D6-A4-AS

Part number: 530326

FESTO



 General operating condition

## Data sheet

| Feature   | Value   |
|---|---|
| Size  | 6   |
| Series  | MS  |
| Actuator lock                                     | Rotary knob with detent<br>can be closed with accessories                                   |
| Mounting position                                 | Any   |
| Structural design                                 | Directly controlled diaphragm regulator<br>with continuous compressed air supply            |
| Controller function                               | Outlet pressure constant<br>With primary pressure compensation<br>With secondary exhausting |
| Symbol  | 00995310  |
| Pressure gauge                                    | G1/4 prepared   |
| Operating pressure                                | 0.8 bar ... 20 bar  |
| Pressure regulation range                         | 0.3 bar ... 7 bar   |
| Max. pressure hysteresis                          | 0.25 bar  |
| Normal nominal flow rate (normalized to DIN 1343) | 6300 l/min  |
| Operating medium                                  | Compressed air as per ISO 8573-1:2010 [7:4:4]<br>Inert gas                                  |
| Information on operating and pilot media          | Operation with oil lubrication possible (required for further use)                          |
| Corrosion resistance class (CRC)                  | 2 - Moderate corrosion stress   |
| LABS (PWIS) conformity                            | VDMA24364-B1/B2-L   |
| Storage temperature                               | -10 °C ... 60 °C  |
| For use in the food industry                      | See supplementary material information  |
| Temperature of medium                             | -10 °C ... 60 °C  |
| Ambient temperature                               | -10 °C ... 60 °C  |
| Product weight                                    | 747 g   |
| Type of mounting                                  | With accessories  |
| Pneumatic connection 1                            | G1/2  |
| Pneumatic connection 2                            | G1/2  |
| Note on materials                                 | RoHS-compliant  |
| Material of operator panel                        | PA<br>POM   |
| Seals material                                    | NBR   |
| Housing material                                  | Die-cast aluminum   |
| Diaphragm material                                | NBR   |