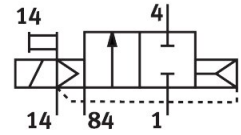


# Air solenoid valve CPVSC1-M1H-D-P-QBC

Part number: 530551

FESTO



General operating condition

## Data sheet

Feature	Value
Valve function	2/2-way, closed, monostable
Actuation type	Electrical
Valve size	10 mm
Normal nominal flow rate (normalized to DIN 1343)	150 l/min
Pneumatic working port	QS-5/32
Operating voltage	22V DC
Operating pressure	-0.09 MPa ... 0.7 MPa
Operating pressure	-0.9 bar ... 7 bar
Structural design	Piston gate valve
Reset method	Pneumatic spring
Degree of protection	IP40
Exhaust air function	Cannot be throttled
Sealing principle	Soft
Mounting position	Any
Manual override	Detenting Non-detenting
Type of control	Piloted
Pilot air supply port	External
Flow direction	Non-reversible
Symbol	00991057
Lap	Positive overlap
Pilot pressure MPa	0.3 MPa ... 0.7 MPa
Pilot pressure	3 bar ... 7 bar
Switching time off	10 ms
On switching time	10 ms
Max. positive test pulse with 0 signal	400 µs
Max. negative test pulse on 1 signal	200 µs
Coil characteristics	22 V DC: 1.0 W
Operating medium	Compressed air as per ISO 8573-1:2010 [7:4:4]
Information on operating and pilot media	Operation with oil lubrication possible (required for further use)
Vibration resistance	Transport application test with severity level 2 as per FN 942017-4 and EN 60068-2-6
Shock resistance	Shock test with severity level 2 as per FN 942017-5 and EN 60068-2-27
Corrosion resistance class (CRC)	1 - Low corrosion stress
LABS (PWIS) conformity	VDMA24364-B2-L
Ambient temperature	-5 °C ... 50 °C

<b>Feature</b>	<b>Value</b>
Product weight	27 g
Electrical connection	Plug
Type of mounting	With through-hole
Pilot exhaust air port 82/84	Common connection
Pneumatic connection 1	Common connection
Pneumatic connection 2	QS-5/32
Pneumatic port 3/5 combined	Common connection
Pneumatic connection 4	QS-5/32
Note on materials	RoHS compliant
Seals material	NBR
Housing material	Die-cast aluminum