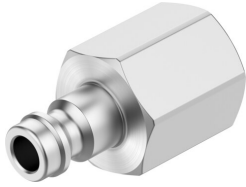


Quick coupling plug KS3-1/8-I

Part number: 531668

FESTO



 General operating condition

Data sheet

| Feature | Value |
|--|---|
| Nominal width | 4.95 mm |
| Operating pressure for entire temperature range | -0.095 MPa ... 1.2 MPa |
| Operating pressure for entire temperature range | -0.95 bar ... 12 bar |
| Operating pressure for entire temperature range | -13.775 psi ... 174 psi |
| Normal nominal flow rate (normalized to DIN 1343) | 225 l/min ... 617 l/min |
| Nominal flow rate standardized according to ISO 8778 | 243.9 l/min ... 668.8 l/min |
| Operating medium | Compressed air as per ISO 8573-1:2010 [7:-:-] |
| Information on operating and pilot media | Operation with oil lubrication possible |
| Corrosion resistance class (CRC) | 1 - Low corrosion stress |
| LABS (PWIS) conformity | VDMA24364-B1/B2-L |
| Ambient temperature | -10 °C ... 60 °C |
| Nominal tightening torque | 5 Nm |
| Tolerance for nominal tightening torque | ± 15% |
| Product weight | 16 g |
| Pneumatic connection 1 | Internal thread G1/8 |
| Note on materials | RoHS-compliant |
| Information on materials | Brass, nickel-plated |