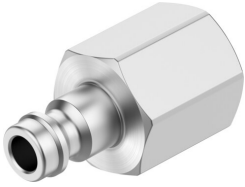


Quick coupling plug KS3-1/4-I

Part number: 531669

FESTO



 General operating condition

Data sheet

Feature	Value
Nominal width	4.95 mm
Operating pressure for entire temperature range	-0.095 MPa ... 1.2 MPa
Operating pressure for entire temperature range	-0.95 bar ... 12 bar
Operating pressure for entire temperature range	-13.775 psi ... 174 psi
Normal nominal flow rate (normalized to DIN 1343)	225 l/min ... 666 l/min
Nominal flow rate standardized according to ISO 8778	243.9 l/min ... 721.9 l/min
Operating medium	Compressed air as per ISO 8573-1:2010 [7:-:-]
Information on operating and pilot media	Operation with oil lubrication possible
Corrosion resistance class (CRC)	1 - Low corrosion stress
LABS (PWIS) conformity	VDMA24364-B1/B2-L
Ambient temperature	-10 °C ... 60 °C
Nominal tightening torque	9.5 Nm
Tolerance for nominal tightening torque	± 15%
Product weight	27 g
Pneumatic connection 1	Internal thread G1/4
Note on materials	RoHS-compliant
Information on materials	Brass, nickel-plated