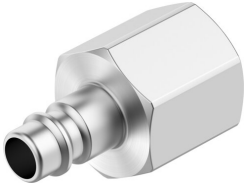


Quick coupling plug KS4-1/2-I

Part number: 531680

FESTO



 [General operating condition](#)

Data sheet

Feature	Value
Nominal width	7.85 mm
Operating pressure for entire temperature range	-0.095 MPa ... 1.2 MPa
Operating pressure for entire temperature range	-0.95 bar ... 12 bar
Operating pressure for entire temperature range	-13.775 psi ... 174 psi
Normal nominal flow rate (normalized to DIN 1343)	756 l/min ... 1314 l/min
Nominal flow rate standardized according to ISO 8778	819.5 l/min ... 1424.4 l/min
Operating medium	Compressed air as per ISO 8573-1:2010 [7:-:-]
Information on operating and pilot media	Lubricated operation possible
Corrosion resistance class (CRC)	1 - Low corrosion stress
LABS (PWIS) conformity	VDMA24364-B1/B2-L
Ambient temperature	-10 °C ... 60 °C
Nominal tightening torque	32.5 Nm
Tolerance for nominal tightening torque	±20%
Product weight	57 g
Pneumatic connection 1	Internal thread G1/2
Note on materials	RoHS compliant
Information on materials	Brass, nickel-plated