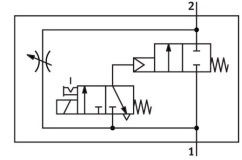


Soft-start valve MS6N-DE-1/2-V230

Part number: 532048

FESTO



 General operating condition

Data sheet

Feature	Value
Actuation type	Electrical
Mounting position	Any
Manual override	Detenting Non-detenting
Structural design	Piston seat
Reset method	Mechanical spring
Type of control	Pilot-controlled
Pilot air supply port	Internal
Flow direction	Non-reversible
Symbol	00991501
Valve function	2/2
Switching position indication	with accessories
Operating pressure	4 bar ... 18 bar
b-value	0.39
C value	28.97 l/sbar
Normal nominal flow rate (normalized to DIN 1343)	6450 l/min
Duty cycle	100%
Coil characteristics	230 V AC: 50/60 Hz, initial power 3.0 VA, holding power 2.4 VA
Certification	c UL - Recognized (OL)
Operating medium	Compressed air as per ISO 8573-1:2010 [7:4:4] Inert gases
Information on operating and pilot media	Operation with oil lubrication possible (required for further use)
Corrosion resistance class (CRC)	2 - Moderate corrosion stress
LABS (PWIS) conformity	VDMA24364-B1/B2-L
For use in the food industry	See supplementary material information
Temperature of medium	-10 °C ... 60 °C
Degree of protection	IP65
Ambient temperature	-10 °C ... 60 °C
Product weight	680 g
Electrical connection	Form C Plug as per DIN EN 175301-803 Rectangular design
Signal status display	With accessories
Type of mounting	With accessories
Pneumatic connection 1	1/2 NPT

Feature	Value
Pneumatic connection 2	1/2 NPT
Note on materials	RoHS-compliant
Seals material	NBR
Housing material	Die-cast aluminum