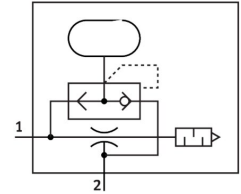


# Vacuum generator VN-05-H-T3-PQ2-VQ2-RO1-A

Part number: 532620

FESTO



 General operating condition

## Data sheet

| Feature                                       | Value  |
|---|--|
| Nominal width of Laval nozzle                 | 0.45 mm  |
| Width dimension                               | 14 mm  |
| Muffler construction type                     | Open   |
| Mounting position                             | Any  |
| Ejector characteristics                       | Standard<br>High negative pressure                     |
| Integrated function                           | Ejector pulse valve, pneumatic<br>Muffler open         |
| Structural design                             | T-shape  |
| Symbol  | 00992043   |
| Operating pressure for max. suction rate      | 3 bar  |
| Operating pressure                            | 1 bar ... 8 bar  |
| Operating pressure for max. vacuum            | 4.9 bar  |
| Max. vacuum                                   | 92 %   |
| Nominal operating pressure                    | 6 bar  |
| Max. suction rate with respect to atmosphere  | 7.2 l/min  |
| Air supply time at nominal operating pressure | 3.63 s   |
| Operating medium                              | Compressed air as per ISO 8573-1:2010 [7:4:4]          |
| Information on operating and pilot media      | Operation with oil lubrication not possible            |
| Corrosion resistance class (CRC)              | 1 - Low corrosion stress                               |
| LABS (PWIS) conformity                        | VDMA24364-B1/B2-L                                      |
| Temperature of medium                         | 0 °C ... 60 °C   |
| Cleaning advice                               | Soap suds  |
| Noise level at nominal operating pressure     | 56 dB(A)   |
| Ambient temperature                           | 0 °C ... 60 °C   |
| Max. tightening torque                        | 0.5 Nm   |
| Product weight                                | 49 g   |
| Type of mounting                              | With through-hole<br>With DIN rail<br>With accessories |
| Pneumatic connection 1                        | QS-6   |
| Pneumatic connection 3                        | Muffler open   |
| Vacuum connection                             | QS-6   |
| Material of connecting thread                 | Wrought aluminum alloy, anodized                       |
| Note on materials                             | RoHS compliant   |

| <b>Feature</b>                | <b>Value</b>           |
|-------------------------------|------------------------|
| Seals material                | NBR                    |
| Female nozzle material        | POM                    |
| Housing material              | Reinforced POM         |
| Muffler material              | Protective grounding   |
| Material of screws            | Steel                  |
| Material of jet nozzle        | Wrought aluminum alloy |
| Material of pneumatic fitting | Brass<br>Nickel-plated |