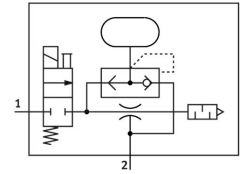
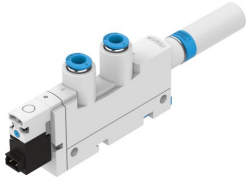


Vacuum generator VN-10-L-T3-PQ2-VQ2-R01-B

Part number: 532641

FESTO



[General operating condition](#)

Data sheet

| Feature | Value |
|---|--|
| Nominal width of Laval nozzle | 0.95 mm |
| Width dimension | 14 mm |
| Muffler construction type | Open |
| Mounting position | Any |
| Ejector characteristics | Standard High suction volume |
| Manual override | Non-detenting |
| Integrated function | Ejector pulse valve, pneumatic On/off valve, electric Pneumatic muffler open |
| Structural design | T-shape |
| Symbol | 00991944 |
| Valve function | 2/2 |
| Operating pressure for max. suction rate | 5 bar |
| Operating pressure | 2 bar ... 8 bar |
| Nominal operating pressure | 6 bar |
| Max. suction rate with respect to atmosphere | 40.5 l/min |
| Air supply time at nominal operating pressure | 0.67 s |
| DC operating voltage range | 21.6 V ... 26.4 V |
| Electrical power consumption | 1.2 W |
| Duty cycle | 100% |
| Operating medium | Compressed air as per ISO 8573-1:2010 [7:4:4] |
| Information on operating and pilot media | Operation with oil lubrication not possible |
| Corrosion resistance class (CRC) | 1 - Low corrosion stress |
| LABS (PWIS) conformity | VDMA24364-B1/B2-L |
| Temperature of medium | 0 °C ... 50 °C |
| Noise level at nominal operating pressure | 72 dB(A) |
| Degree of protection | IP40 |
| Ambient temperature | 0 °C ... 50 °C |
| Product weight | 63 g |
| Electrical connection | Plug |
| Type of mounting | With through-hole With H-rail With accessories |
| Pneumatic connection 1 | QS-6 |
| Pneumatic connection 3 | Pneumatic muffler open |

| Feature | Value |
|-------------------------------|----------------------------------|
| Vacuum connection | QS-6 |
| Material of connecting thread | Wrought aluminum alloy, anodized |
| Note on materials | RoHS-compliant |
| Seals material | NBR |
| Female nozzle material | POM |
| Housing material | POM-reinforced |
| Muffler material | PE |
| Material of screws | Steel |
| Material of jet nozzle | Wrought aluminum alloy |
| Material of pneumatic fitting | Brass Nickel-plated |