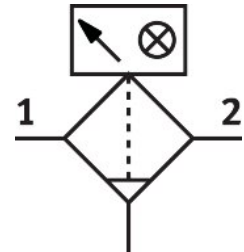


Fine filter LFMB-1/2-D-MAXI-DA

Part number: 532824

FESTO



[PDF General operating condition](#)

Data sheet

Feature	Value
Series	D
Size	Maxi
Structural design	Fiber filter
Grade of filtration	1 µm
Condensate drain	Manual, rotating
Symbol	00991543
Operating pressure	0.1 MPa ... 1.6 MPa
Operating pressure	1 bar ... 16 bar
Operating pressure	14.5 psi ... 232 psi
Operating medium	Compressed air as per ISO 8573-1:2010 [6:4:4] Inert gases
Air quality class at the output	Compressed air according to ISO 8573-1:2010 [5:4:3] Inert gases
Max. standard flow rate for air quality class	2400 l/min
Min. standard flow rate for air quality class	800 l/min
Filter efficiency	99.99 %
Max. condensate volume	80 ml
Bowl guard	Metal bowl guard
Corrosion resistance class (CRC)	2 - Moderate corrosion stress
LABS (PWIS) conformity	VDMA24364-B1/B2-L
Temperature of medium	1.5 °C ... 60 °C
Ambient temperature	-10 °C ... 60 °C
Storage temperature	-10 °C ... 60 °C
Filter efficiency, fine particles	99 %
Residual oil content	0.5 mg/m ³
Filter efficiency, oil aerosol	90 %
Differential pressure display	Visual display
Type of mounting	With accessories
Mounting position	Vertical ±5°
Pneumatic connection 1	G1/2
Pneumatic connection 2	G1/2
Housing material	Die-cast zinc
Compressed air filter material	Borosilicate glass fiber

Feature	Value
Material of bowl	PC
Note on materials	RoHS compliant
Product weight	1340 g