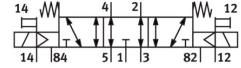


# Air solenoid valve VMPA1-M1H-E-S-M7-PI

FESTO

Part number: 533389



[General operating condition](#)

## Data sheet

| Feature   | Value   |
|---|---|
| Valve function                                    | 5/3, exhausted                                      |
| Actuation type                                    | Electrical  |
| Valve size  | 10 mm   |
| Normal nominal flow rate (normalized to DIN 1343) | 240 l/min   |
| Pneumatic working port                            | M7  |
| Operating voltage                                 | 24V DC  |
| Operating pressure                                | -0.09 MPa ... 1 MPa                                 |
| Operating pressure                                | -0.9 bar ... 10 bar                                 |
| Structural design                                 | Piston gate valve                                   |
| Reset method                                      | Mechanical spring                                   |
| Certification                                     | c UL us - Recognized (OL)                           |
| CE marking (see declaration of conformity)        | As per EU EMC directive<br>As per EU RoHS directive |
| UKCA marking (see declaration of conformity)      | To UK RoHS instructions                             |
| Degree of protection                              | IP65<br>In mounted state<br>as per IEC 60529        |
| Exhaust air function                              | With flow control option                            |
| Sealing principle                                 | Soft  |
| Mounting position                                 | Any   |
| Manual override                                   | Detenting<br>Non-detenting                          |
| Type of control                                   | Pilot-controlled                                    |
| Pilot air supply port                             | External  |
| Flow direction                                    | Reversible  |
| Symbol  | 00991032  |
| Lap   | Overlap   |
| Signal status display                             | yes   |
| Pilot pressure MPa                                | 0.3 MPa ... 0.8 MPa                                 |
| Pilot pressure                                    | 3 bar ... 8 bar                                     |
| Suitability for vacuum                            | yes   |
| Standard nominal flow rate with QS-6              | 240 l/min   |
| Switching time off                                | 35 ms   |
| On switching time                                 | 10 ms   |
| Changeover time                                   | 15 ms   |
| Max. positive test pulse with 0 signal            | 400 µs  |
| Max. negative test pulse on 1 signal              | 200 µs  |

| Feature                                   | Value  |
|---|--|
| Permissible voltage fluctuations          | +/- 25 %   |
| Operating medium                          | Compressed air as per ISO 8573-1:2010 [7:4:4]  |
| Information on operating and pilot media  | Operation with oil lubrication possible (required for further use)                   |
| Vibration resistance                      | Transport application test with severity level 2 as per FN 942017-4 and EN 60068-2-6 |
| Shock resistance                          | Shock test with severity level 2 as per FN 942017-5 and EN 60068-2-27                |
| Corrosion resistance class (CRC)          | 1 - Low corrosion stress   |
| LABS (PWIS) conformity                    | VDMA24364-B1/B2-L  |
| Storage temperature                       | -20 °C ... 40 °C   |
| Temperature of medium                     | -5 °C ... 50 °C  |
| Relative air humidity                     | Max. 90 % at 40 °C   |
| Ambient temperature                       | -5 °C ... 50 °C  |
| Max. tightening torque for valve mounting | 0.25 Nm  |
| Product weight                            | 143 g  |
| Electrical connection                     | M8x1<br>Plug<br>as per EN 60947-5-2  |
| Type of mounting                          | With through-hole  |
| Pilot air port 12/14                      | M5   |
| Pilot exhaust air port 82/84              | M5   |
| Pneumatic connection 1                    | M7   |
| Pneumatic connection 2                    | M7   |
| Pneumatic connection 3                    | M7   |
| Pneumatic connection 4                    | M7   |
| Pneumatic connection 5                    | M7   |
| Note on materials                         | RoHS-compliant   |
| Seals material                            | NBR  |
| Housing material                          | Die-cast aluminum  |