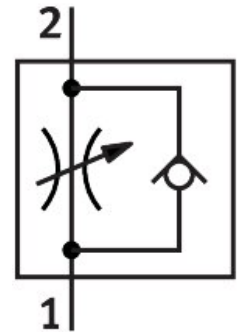



# One-way flow control valve GR-QB-1/2-U

Part number: 534685

FESTO



 [General operating condition](#)

## Data sheet

Feature	Value
Valve function	Flow control non-return function
Pneumatic connection 1	QB-1/2
Pneumatic connection 2	QB-1/2
Actuation type	Manual
Adjusting element	Slotted screw
Type of mounting	With through-hole
Standard nominal flow rate in flow control direction	1779.66 l/min
Standard nominal flow rate in non-return direction	1372.881 l/min ... 1614.407 l/min
Operating pressure	-0.951 bar ... 7.998 bar
Ambient temperature	0 °C ... 60 °C
Housing material	PBT-reinforced
Mounting position	Any
Symbol	00991453
Standard flow rate in flow control direction 6 → 0 bar	2949.2 l/min
Standard flow rate in non-return direction at 6 → 0 bar	2110.169 l/min ... 2567.797 l/min
Operating medium	Compressed air as per ISO 8573-1:2010 [7:4:4]
Information on operating and pilot media	Operation with oil lubrication possible (required for further use)
LABS (PWIS) conformity	VDMA24364 zone III
Temperature of medium	0 °C ... 60 °C
Product weight	119.07 g
Material of screwed plug	Brass Nickel-plated
Note on materials	RoHS-compliant
Seals material	NBR
Releasing ring material	POM
Knurled head material	Brass Nickel-plated
Material of adjusting screw	Brass Nickel-plated