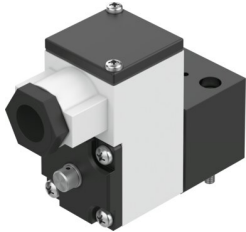


Pilot valve MGXIAH-3/2-0.8-24DC-EX

Part number: 535614

FESTO



[General operating condition](#)

Data sheet

Feature	Value
Valve function	3/2, closed, monostable
Actuation type	Electrical
Operating pressure	-0.09 MPa ... 0.8 MPa
Operating pressure	-0.9 bar ... 8 bar
Operating pressure	-13.05 psi ... 116 psi
Structural design	On/off valve
Reset method	Mechanical spring
CE marking (see declaration of conformity)	as per EU explosion protection directive (ATEX)
Explosion protection certification outside the EU	EPL Db (CN) EPL Gb (CN)
Certificate issuing authority	IEC: IECEx CML 17.0030X
ATEX category gas	II 1G
ATEX category for dust	II 1D
Type of ignition protection for gas	Ex ia IIC T6...T5 Gb
Type of (ignition) protection for dust	Ex ia IIIC T135°C Db
Explosive ambient temperature	-40°C ≤ Ta ≤ 50°C/65°C
Degree of protection	IP65
Manual override	Detenting
Flow direction	Non-reversible
Symbol	00991308
Duty cycle	100%
Insulation class	H
Max. input power Pi	-40°C ~+50°C T6 = 2.98W -40°C ~+65°C T135°C = 2.98W -40°C ~+65°C T5 = 2.98W -40°C ~+65°C T6 = 1W
Max. input voltage Vi	31 V
Max. input current Ii	0.67 A
Coil characteristics	24 V DC: 1.5 W
Effective internal inductance Li	Negligibly low
Effective internal capacitance Ci	Negligibly low
Permissible frequency fluctuations	+/- 10%
Explosion prevention and protection	Zone 0 (IEC-EX) Zone 1 (ATEX) Zone 1 (CN) Zone 21 (CN) Zone 22 (ATEX)
Operating medium	Compressed air as per ISO 8573-1:2010 [7:4:4]

Feature	Value
Information on operating and pilot media	Operation with oil lubrication possible (required for further use)
Corrosion resistance class (CRC)	2 - Moderate corrosion stress
LABS (PWIS) conformity	VDMA24364 zone III
Ambient temperature	-20 °C ... 80 °C
Type of mounting	CNOMO
Note on materials	RoHS-compliant