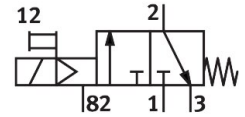
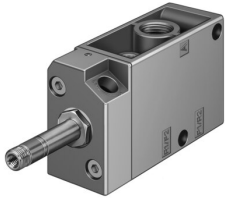


# Air solenoid valve MFH-3-1/4-EX

Part number: 535898

FESTO



[PDF](#) General operating condition

## Data sheet

| Feature   | Value   |
|---|---|
| Valve function                                    | 3/2-way, closed, monostable                     |
| Actuation type                                    | Electrical                                      |
| Width   | 30.5 mm   |
| Normal nominal flow rate (normalized to DIN 1343) | 800 l/min                                       |
| Pneumatic working port                            | G1/4  |
| Operating voltage                                 | Via solenoid coil, to be ordered separately     |
| Operating pressure                                | 0.15 MPa ... 0.8 MPa                            |
| Operating pressure                                | 1.5 bar ... 8 bar                               |
| Structural design                                 | Plate seat                                      |
| Reset method                                      | Mechanical spring                               |
| CE marking (see declaration of conformity)        | as per EU explosion protection directive (ATEX) |
| Explosion protection certification outside the EU | EPL Db (GB)<br>EPL Gb (GB)                      |
| UKCA marking (see declaration of conformity)      | acc. to UK EX instructions                      |
| ATEX category gas                                 | II 2G   |
| ATEX category for dust                            | II 2D   |
| Type of ignition protection for gas               | Ex h IIC T4 Gb                                  |
| Type of (ignition) protection for dust            | Ex h IIIC T130°C Db                             |
| Explosive ambient temperature                     | -5°C ≤ Ta ≤ +40°C                               |
| Degree of protection                              | IP65  |
| Nominal width                                     | 7 mm  |
| Width dimension                                   | 32 mm   |
| Exhaust air function                              | Adjustable                                      |
| Sealing principle                                 | Soft  |
| Mounting position                                 | Any   |
| Manual override                                   | Detenting                                       |
| Type of control                                   | Piloted   |
| Flow direction                                    | Non-reversible                                  |
| Symbol  | 00991041  |
| Lap   | Negative overlap                                |
| Switching time off                                | 29 ms   |
| On switching time                                 | 10 ms   |
| Max. positive test pulse with 0 signal            | 2200 μs   |
| Max. negative test pulse on 1 signal              | 3700 μs   |
| Coil characteristics                              | See solenoid coil, to be ordered separately     |

| Feature                                  | Value   |
|--|---|
| Explosion prevention and protection      | Zone 1 (ATEX)<br>Zone 1 (UKEX)<br>Zone 2 (ATEX)<br>Zone 21 (ATEX)<br>Zone 21 (UKEX)<br>Zone 22 (ATEX) |
| Operating medium                         | Compressed air as per ISO 8573-1:2010 [7:4:4]   |
| Information on operating and pilot media | Operation with oil lubrication possible (required for further use)                                    |
| Corrosion resistance class (CRC)         | 1 - Low corrosion stress  |
| LABS (PWIS) conformity                   | VDMA24364-B1/B2-L   |
| Storage temperature                      | -20 °C ... 60 °C  |
| Temperature of medium                    | -5 °C ... 40 °C   |
| Ambient temperature                      | -5 °C ... 40 °C   |
| Product weight                           | 320 g   |
| Electrical connection                    | Via F coil, to be ordered separately  |
| Type of mounting                         | On terminal strip<br>With through-hole  |
| Venting hole connection                  | M3  |
| Pilot exhaust air port 82                | M5  |
| Pneumatic connection 1                   | G1/4  |
| Pneumatic connection 2                   | G1/4  |
| Pneumatic connection 3                   | G1/4  |
| Note on materials                        | RoHS compliant  |
| Seals material                           | NBR   |
| Housing material                         | Die-cast aluminum   |