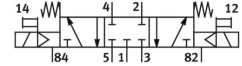


Air solenoid valve MFH-5/3G-1/8-B-EX

Part number: 535936

FESTO



[General operating condition](#)

Data sheet

Feature	Value
Valve function	5/3, closed
Actuation type	Electrical
Width	26 mm
Normal nominal flow rate (normalized to DIN 1343)	1000 l/min
Pneumatic working port	G1/8
Operating pressure	0.3 MPa ... 1 MPa
Operating pressure	3 bar ... 10 bar
Structural design	Piston gate valve
Reset method	Mechanical spring
CE marking (see declaration of conformity)	as per EU explosion protection directive (ATEX)
Explosion protection certification outside the EU	EPL Db (GB) EPL Gb (GB)
UKCA marking (see declaration of conformity)	acc. to UK EX instructions
ATEX category gas	II 2G
ATEX category for dust	II 2D
Type of ignition protection for gas	Ex h IIC T4 Gb
Type of (ignition) protection for dust	Ex h IIIC T130°C Db
Explosive ambient temperature	-5°C ≤ Ta ≤ +40°C
Degree of protection	IP65
Nominal width	8 mm
Width dimension	27 mm
Sealing principle	Soft
Mounting position	Any
Manual override	Non-detenting
Type of control	Pilot-controlled
Pilot air supply port	Internal
Flow direction	Non-reversible
Symbol	00991033
Lap	Overlap
Max. switching frequency	3 Hz
Switching time off	23 ms
On switching time	20 ms
Changeover time	23 ms
Max. positive test pulse with 0 signal	2200 μs
Max. negative test pulse on 1 signal	3700 μs

Feature	Value
Explosion prevention and protection	Zone 1 (ATEX) Zone 1 (UKEX) Zone 2 (ATEX) Zone 21 (ATEX) Zone 21 (UKEX) Zone 22 (ATEX)
Operating medium	Compressed air as per ISO 8573-1:2010 [7:4:4]
Information on operating and pilot media	Operation with oil lubrication possible (required for further use)
Corrosion resistance class (CRC)	1 - Low corrosion stress
LABS (PWIS) conformity	VDMA24364-B1/B2-L
Storage temperature	-40 °C ... 60 °C
Temperature of medium	-5 °C ... 40 °C
Ambient temperature	-5 °C ... 40 °C
Product weight	440 g
Electrical connection	Via F coil, to be ordered separately
Type of mounting	With through-hole
Pilot exhaust air port 82	M5
Pilot exhaust air port 84	M5
Pneumatic connection 1	G1/8
Pneumatic connection 2	G1/8
Pneumatic connection 3	G1/8
Pneumatic connection 4	G1/8
Pneumatic connection 5	G1/8
Note on materials	RoHS-compliant
Seals material	NBR
Housing material	Die-cast aluminum