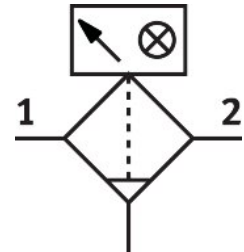


# Fine filter MS6-LFM-1/2-BRM-DA

Part number: 536835

FESTO



[PDF General operating condition](#)

## Data sheet

Feature	Value
Series	MS
Size	6
Structural design	Fiber filter
Grade of filtration	1 µm
Condensate drain	Manually rotating
Symbol	00991543
Operating pressure	0 MPa ... 2 MPa
Operating pressure	0 bar ... 20 bar
Operating pressure	0 psi ... 290 psi
Operating medium	Compressed air as per ISO 8573-1:2010 [6:-:4] Inert gas
Air quality class at the output	Compressed air as per ISO 8573-1:2010 [5:-:3]
Max. standard flow rate for air quality class	950 l/min
Min. standard flow rate for air quality class	140 l/min
Filter efficiency	99.99 %
Max. condensate volume	38 ml
Bowl guard	Plastic bowl guard
Corrosion resistance class (CRC)	2 - Moderate corrosion stress
LABS (PWIS) conformity	VDMA24364-B1/B2-L
For use in the food industry	See supplementary material information
Temperature of medium	-10 °C ... 60 °C
Ambient temperature	-10 °C ... 60 °C
Storage temperature	-10 °C ... 60 °C
Filter efficiency, fine particles	99 %
Residual oil content	0.5 mg/m <sup>3</sup>
Filter efficiency, oil aerosol	90 %
Differential pressure display	Visual display
Type of mounting	With accessories
Mounting position	Vertical +/- 5°
Pneumatic connection 1	G1/2
Pneumatic connection 2	G1/2
Housing material	Die-cast aluminum

<b>Feature</b>	<b>Value</b>
Compressed air filter material	Borosilicate fiber
Material of bowl	PC
Seals material	NBR
Note on materials	RoHS-compliant
Product weight	600 g