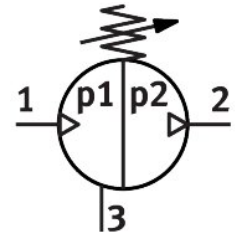
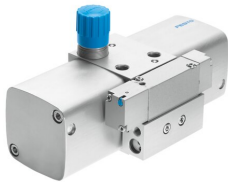



# Pressure booster DPA-40-10

Part number: 537273

FESTO



 General operating condition

## Data sheet

Feature	Value
Piston diameter	40 mm
Mounting position	Any
Structural design	Twin-piston pressure intensifier
Symbol	00991432
Pressure gauge	G1/8 prepared
Output pressure 2	0.45 MPa ... 1 MPa
Outlet pressure 2	4.5 bar ... 10 bar
Output pressure 2	65.25 psi ... 145 psi
Operating pressure	0.25 MPa ... 0.8 MPa
Operating pressure	2.5 bar ... 8 bar
Operating pressure	36.25 psi ... 116 psi
Pressure regulation range MPa	0.45 MPa ... 1 MPa
Pressure regulation range	4.5 bar ... 10 bar
Pressure regulation range psi	65.25 psi ... 145 psi
Inlet pressure 1	2.5 bar ... 8 bar
Inlet pressure 1 MPa	0.25 MPa ... 0.8 MPa
Inlet pressure 1 psi	36.25 psi ... 116 psi
Information on pressure regulation range	If the controller spring is tensioned to the maximum, the maximum output pressure may be exceeded by 40%.
Operating medium	Compressed air as per ISO 8573-1:2010 [7:3:4]
Information on operating and pilot media	Operation with oil lubrication not possible
Corrosion resistance class (CRC)	2 - Moderate corrosion stress
LABS (PWIS) conformity	VDMA24364-B1/B2-L
Storage temperature	5 °C ... 60 °C
Ambient temperature	5 °C ... 60 °C
Product weight	1500 g
Type of mounting	With internal thread
Pneumatic connection 1	G1/4
Pneumatic connection 2	G1/4
Pneumatic connection 3	M7
Note on materials	RoHS-compliant