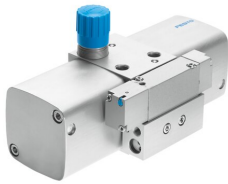


Pressure booster DPA-40-16

Part number: 537274

FESTO



 General operating condition

Data sheet

| Feature | Value |
|--|---|
| Piston diameter | 40 mm |
| Mounting position | Any |
| Structural design | Twin-piston pressure intensifier |
| Symbol | 00991432 |
| Pressure gauge | G1/8 prepared |
| Output pressure 2 | 0.45 MPa ... 1.6 MPa |
| Outlet pressure 2 | 4.5 bar ... 16 bar |
| Output pressure 2 | 65.25 psi ... 232 psi |
| Operating pressure | 0.25 MPa ... 1 MPa |
| Operating pressure | 2.5 bar ... 10 bar |
| Operating pressure | 36.25 psi ... 145 psi |
| Pressure regulation range MPa | 0.45 MPa ... 1.6 MPa |
| Pressure regulation range | 4.5 bar ... 16 bar |
| Pressure regulation range psi | 65.25 psi ... 232 psi |
| Inlet pressure 1 | 2.5 bar ... 10 bar |
| Inlet pressure 1 MPa | 0.25 MPa ... 1 MPa |
| Inlet pressure 1 psi | 36.25 psi ... 145 psi |
| Information on pressure regulation range | If the controller spring is tensioned to the maximum, the maximum output pressure may be exceeded by 40%. |
| Operating medium | Compressed air as per ISO 8573-1:2010 [7:3:4] |
| Information on operating and pilot media | Operation with oil lubrication not possible |
| Corrosion resistance class (CRC) | 2 - Moderate corrosion stress |
| LABS (PWIS) conformity | VDMA24364-B1/B2-L |
| Storage temperature | 5 °C ... 60 °C |
| Ambient temperature | 5 °C ... 60 °C |
| Product weight | 1500 g |
| Type of mounting | With internal thread |
| Pneumatic connection 1 | G1/4 |
| Pneumatic connection 2 | G1/4 |
| Pneumatic connection 3 | M7 |
| Note on materials | RoHS-compliant |