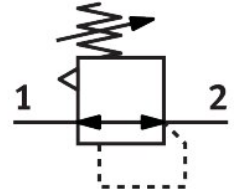


Precision pressure regulator MS6-LRP-1/2-D7-A8

Part number: 538026

FESTO



General operating condition

Data sheet

Feature	Value
Size	6
Series	MS
Actuator lock	Rotary knob with detent
Mounting position	Any
Structural design	Pilot-controlled precision diaphragm regulator
Controller function	Constant output pressure With secondary exhausting
Symbol	00991540
Pressure gauge	Set up for G1/8
Operating pressure	0.1 MPa ... 1.4 MPa
Operating pressure	1 bar ... 14 bar
Pressure regulation range	0.1 bar ... 12 bar
Max. pressure hysteresis	0.02 bar
Flow rate of secondary venting	≥900 l/min
Normal nominal flow rate (normalized to DIN 1343)	≥5000 l/min
Operating medium	Compressed air as per ISO 8573-1:2010 [7:4:4] Inert gases
Information on operating and pilot media	Ester oil < 0.1 mg/m ³ , according to ISO 8573-1:2010 [-:~:2] Operation with oil lubrication not possible
Corrosion resistance class (CRC)	2 - Moderate corrosion stress
LABS (PWIS) conformity	VDMA24364-B1/B2-L
Storage temperature	-10 °C ... 60 °C
Temperature of medium	-10 °C ... 60 °C
Ambient temperature	-10 °C ... 60 °C
Product weight	850 g
Type of mounting	With accessories
Pneumatic connection 1	G1/2
Pneumatic connection 2	G1/2
Pneumatic connection 3	G1/4
Note on materials	RoHS compliant
Seals material	NBR
Housing material	Aluminum