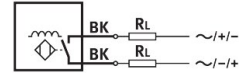
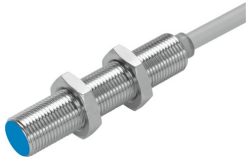


Proximity sensor SIED-M12B-ZS-K-L

Part number: 538272

FESTO



[General operating condition](#)

Data sheet

Feature	Value
Design	Round
Conforms to standard	EN 60947-5-2
Symbol	00991712
Certification	RCM compliance mark c UL us - Listed (OL)
CE marking (see declaration of conformity)	As per EU EMC directive As per EU low voltage directive
UKCA marking (see declaration of conformity)	To UK instructions for electrical equipment
Measuring principle	Inductive
Rated operating distance	2 mm
Assured operating distance	1.62 mm
Reduction factors	Aluminum = 0.5 Stainless steel St 18/8 = 0.9 Copper = 0.4 Brass = 0.6 Steel St 37 = 1.0
Ambient temperature	-25 °C ... 85 °C
Repetition accuracy	0.1 mm
Switching output	Non-contact, 2-wire
Switching element function	N/O contact
Hysteresis	0.02 mm ... 0.44 mm
Max. switching frequency DC	1200 Hz
Max. switching frequency AC	25 Hz
Max. output current	200 mA
Voltage drop	≤8 V
Minimum load current	5 mA
Short-circuit protection	no
Operating voltage range AC	20 V ... 265 V
DC operating voltage range	20 V ... 320 V
Mains frequency	50 Hz
Idle current	≤1.5 mA
Reverse polarity protection	for all electrical connections
Electrical connection	Cable
Cable length	2.5 m
Material of cable sheath	TPE-U(PUR)
Insulating sheath material	PVC
Size	M12

Feature	Value
Type of mounting	With lock nut
Tightening torque	10 Nm
Mounting type	Flush
Product weight	90 g
Housing material	Nickel-plated
Switching status indication	LED yellow
Ambient temperature with flexible cable installation	-5 °C ... 50 °C
Degree of protection	IP67
Corrosion resistance class (CRC)	1 - Low corrosion stress
LABS (PWIS) conformity	VDMA24364-B2-L
Selection of additional sensor information	For direct and alternating voltage
Electrical output	Non-contact, 2-wire
Selection of sensor version	Standard