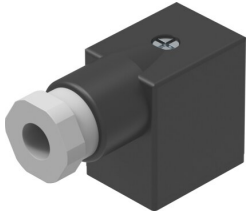


Plug socket MSSD-F-M16

Part number: 539710

FESTO



 [General operating condition](#)

Data sheet

Feature	Value
Contact durability	50
Cable outlet	Angled
Note on cable outlet	Can be rotated through 180°
Product weight	35 g
Electrical connection 1, design	Rectangular
Electrical connection 1, connection type	Socket
Electrical connection 1, connection technology	Connection diagram form B as per industrial standard, 11 mm
Electrical connection 1, number of pins/wires	3
Electrical connection 1, type of mounting	On air solenoid valve with M3 central screw
Electrical connection 2, connection technology	Screw terminal
DC operating voltage range	0 V ... 250 V
Operating voltage range AC	0 V ... 250 V
Current rating at 40° C	6 A
Surge resistance	2 kV
Protective earth connection	Available
Cable fitting	M16x1.5
Cable diameter	6 mm ... 8 mm
Nominal conductor cross section	≤0.75 mm ²
Degree of protection	IP65
Note on degree of protection	In mounted state
Ambient temperature	-20 °C ... 115 °C
LABS (PWIS) conformity	VDMA24364-B2-L
Note on materials	RoHS-compliant
Contamination level	3
Corrosion resistance class (CRC)	1 - Low corrosion stress
Housing material	PA-reinforced
Housing colour	Black
Seals material	HNBR