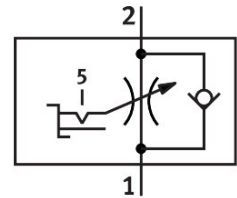


One-way flow control valve GRLSA-1/8-QS-6

Part number: 540661

FESTO



General operating condition

Data sheet

Feature	Value
Valve function	Exhaust air flow control non-return function
Pneumatic connection 1	QS-6
Pneumatic connection 2	G1/8
Actuation type	Manual
Adjusting element	Internal hexagon
Type of mounting	Screw-in
Standard nominal flow rate in flow control direction	0 l/min ... 250 l/min
Standard nominal flow rate in non-return direction	180 l/min ... 310 l/min
Ambient temperature	-10 °C ... 60 °C
Mounting position	Any
Symbol	00991475
Operating pressure for entire temperature range	0.2 bar ... 10 bar
Standard flow rate in flow control direction 6 → 0 bar	0 l/min ... 410 l/min
Standard flow rate in non-return direction at 6 → 0 bar	430 l/min ... 540 l/min
Operating medium	Compressed air as per ISO 8573-1:2010 [7:4:4]
Information on operating and pilot media	Operation with oil lubrication possible (required for further use)
LABS (PWIS) conformity	VDMA24364-B2-L
Cleanroom suitability, measured according to ISO 14644-14	Class 4 according to ISO 14644-1
Storage temperature	-10 °C ... 40 °C
Temperature of medium	-10 °C ... 60 °C
Nominal tightening torque	3.5 Nm
Tolerance for nominal tightening torque	± 20%
Product weight	19.5 g
Seals material	NBR
Hollow bolt material	Wrought aluminum alloy Anodized
Releasing ring material	POM
Material of adjusting screw	PA-reinforced
Swivel joint material	Die-cast zinc