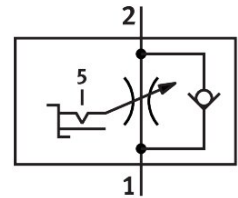


One-way flow control valve GRLSA-1/4-QS-8

Part number: 540662

FESTO



 [General operating condition](#)

Data sheet

Feature	Value
Valve function	Exhaust air flow control non-return function
Pneumatic connection 1	QS-8
Pneumatic connection 2	G $\frac{1}{4}$
Actuation type	Manual
Adjusting element	Internal hexagon
Type of mounting	Screw-in
Standard nominal flow rate in flow control direction	0 l/min ... 450 l/min
Standard nominal flow rate in non-return direction	390 l/min ... 570 l/min
Ambient temperature	-10 °C ... 60 °C
Mounting position	Any
Symbol	00991475
Operating pressure for entire temperature range	0.2 bar ... 10 bar
Standard flow rate in flow control direction 6 → 0 bar	0 l/min ... 700 l/min
Standard flow rate in non-return direction at 6 → 0 bar	820 l/min ... 930 l/min
Operating medium	Compressed air as per ISO 8573-1:2010 [7:4:4]
Information on operating and pilot media	Operation with oil lubrication possible (required for further use)
LABS (PWIS) conformity	VDMA24364-B2-L
Cleanroom suitability, measured according to ISO 14644-14	Class 4 according to ISO 14644-1
Storage temperature	-10 °C ... 40 °C
Temperature of medium	-10 °C ... 60 °C
Nominal tightening torque	11 Nm
Tolerance for nominal tightening torque	± 10%
Product weight	34.8 g
Seals material	NBR
Hollow bolt material	Wrought aluminum alloy Anodized
Releasing ring material	POM
Material of adjusting screw	PA-reinforced
Swivel joint material	Die-cast zinc