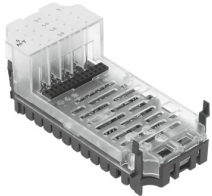


Analogue module CPX-4AE-T

Part number: 541486

FESTO



 General operating condition

Data sheet

Feature	Value
Dimensions W x L x H	50 mm x 107 mm x 50 mm
Product weight	47 g
Ambient temperature	-5 °C ... 50 °C
Storage temperature	-20 °C ... 70 °C
Degree of protection	Depends on manifold block
Corrosion resistance class (CRC)	(when installed)
Max. cable length	200 m Shielded
LABS (PWIS) conformity	VDMA24364-B2-L
Housing material	PC
LED indicators	1 group diagnostics 4 channel diagnostics
Diagnostics	Wire break per channel Limit value violation per channel Short circuit, input signal Parameterization error
Parameterization	Forcing per channel Limit value monitoring per channel Unit of measurement Measured value smoothing Sensor type per channel Wire break monitoring per channel
Internal cycle time	250 ms
DC operating voltage range	18 V ... 30 V
Nominal operating voltage DC	24 V
Intrinsic current consumption at nominal operating voltage	Typ. 50 mA
No. of inputs	4
Data format	15 bit + sign Binary representation in tenths of a degree
Repetition accuracy	0.05 % at 25 °C
Basic error limit at 25°C	±0.6 K for Pt sensors
Operating error limit related to the ambient temperature range	±0.6 %
Sensor type	Ni 100 Ni 1000 Ni 120 Ni 500 Pt 100 Pt 1000 Pt 200 Pt 500
Electrical isolation between channels	no

Feature	Value
Electrical isolation between channel and internal bus	yes
Fuse protection (short circuit)	Internal electronic fuse