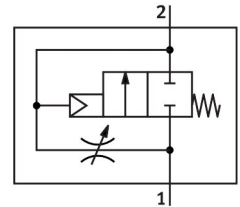


Soft-start valve MS12-DL-G

Part number: 541497

FESTO



General operating condition

Data sheet

Feature	Value
Exhaust air function	With flow control option
Actuation type	Pneumatic
Mounting position	Any
Manual override	None
Structural design	Piston seat
Reset method	Mechanical spring
Type of control	Direct
Pilot air supply port	Internal
Flow direction	Non-reversible
Symbol	00991513
Valve function	2/2
Operating pressure	2 bar ... 20 bar
Normal nominal flow rate (normalized to DIN 1343)	25000 l/min ... 42000 l/min
Operating medium	Compressed air as per ISO 8573-1:2010 [7:-:-]
Corrosion resistance class (CRC)	2 - Moderate corrosion stress
LABS (PWIS) conformity	VDMA24364-B1/B2-L
Temperature of medium	-10 °C ... 60 °C
Ambient temperature	-10 °C ... 60 °C
Product weight	3600 g
Type of mounting	With accessories
Pneumatic connection 1	Battery module
Pneumatic connection 2	Battery module
Seals material	NBR
Housing material	Die-cast aluminum