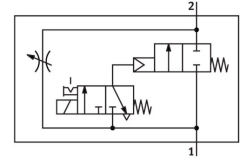


# Soft-start valve MS12-DE-G-V24

Part number: 541498

FESTO



General operating condition

## Data sheet

Feature	Value
Exhaust air function	With flow control option
Actuation type	Electrical
Mounting position	Any
Manual override	Detenting Non-detenting
Structural design	Piston seat
Reset method	Mechanical spring
Type of control	Pilot-controlled
Pilot air supply port	Internal
Flow direction	Non-reversible
Symbol	00991501
Valve function	2/2
Switching position indication	with accessories
Operating pressure	3 bar ... 16 bar
Normal nominal flow rate (normalized to DIN 1343)	25000 l/min ... 42000 l/min
Duty cycle	100%
Coil characteristics	24 V DC: 8.4 W 42 V AC: 50 Hz, initial power 14.0 VA, holding power 10.0 VA 42 V AC: 60 Hz, initial power 12.0 VA, holding power 7.0 VA
Operating medium	Compressed air as per ISO 8573-1:2010 [:-:-]
Corrosion resistance class (CRC)	2 - Moderate corrosion stress
LABS (PWIS) conformity	VDMA24364-B1/B2-L
Temperature of medium	-10 °C ... 50 °C
Degree of protection	IP65
Ambient temperature	-10 °C ... 50 °C
Product weight	3800 g
Electrical connection	as per DIN EN 175301-803 Rectangular design
Signal status display	With accessories
Type of mounting	With accessories
Pneumatic connection 1	Battery module
Pneumatic connection 2	Battery module
Seals material	NBR
Housing material	Die-cast aluminum