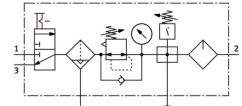


# Air preparation combination unit MSB6N-1/2:C3J2F3M1-WP

FESTO

Part number: 543579



[PDF General operating condition](#)

## Data sheet

| Feature   | Value  |
|---|--|
| Size  | 6  |
| Series  | MS   |
| Actuator lock                                     | Rotary knob with detent<br>can be closed with accessories  |
| Mounting position                                 | Vertical +/- 5°  |
| Grade of filtration                               | 40 µm  |
| Condensate drain                                  | Fully automatic  |
| Structural design                                 | Standard oil mist lubricator   |
| Controller function                               | Outlet pressure constant<br>With primary pressure compensation<br>With secondary exhausting<br>With return flow function |
| Bowl guard  | Plastic bowl guard   |
| Symbol  | 00991598   |
| Pressure gauge                                    | with pressure gauge  |
| Operating pressure                                | 2 bar ... 12 bar   |
| Pressure regulation range                         | 1 bar ... 12 bar   |
| Normal nominal flow rate (normalized to DIN 1343) | 3300 l/min   |
| Operating medium                                  | Compressed air as per ISO 8573-1:2010 [7:4:4]<br>Inert gas   |
| Information on operating and pilot media          | Operation with oil lubrication possible (required for further use)   |
| Corrosion resistance class (CRC)                  | 2 - Moderate corrosion stress  |
| LABS (PWIS) conformity                            | VDMA24364-B1/B2-L  |
| Storage temperature                               | -10 °C ... 60 °C   |
| For use in the food industry                      | See supplementary material information   |
| Air quality class at the output                   | Compressed air as per ISO 8573-1:2010 [7:4:-]  |
| Temperature of medium                             | -10 °C ... 60 °C   |
| Ambient temperature                               | -10 °C ... 60 °C   |
| Product weight                                    | 2550 g   |
| Type of mounting                                  | With accessories   |
| Pneumatic connection 1                            | 1/2 NPT  |
| Pneumatic connection 2                            | 1/2 NPT  |
| Pneumatic connection 3                            | G1/2   |
| Note on materials                                 | RoHS-compliant   |
| Housing material                                  | Die-cast aluminum  |
| Material of bowl                                  | PC   |