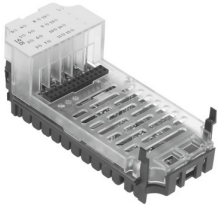


Input module CPX-16DE

Part number: 543815

FESTO



 General operating condition

Data sheet

| Feature | Value |
|--|--|
| Dimensions W x L x H | 50 mm x 107 mm x 50 mm |
| Product weight | 41 g |
| Ambient temperature | -5 °C ... 50 °C |
| Storage temperature | -20 °C ... 70 °C |
| Degree of protection | Depends on manifold block |
| Corrosion resistance class (CRC) | (when installed) |
| LABS (PWIS) conformity | VDMA24364-B2-L |
| Housing material | PC |
| LED indicators | 1 group diagnostics 16 channel status |
| Diagnostics | Short circuit/overload per channel |
| Parameterization | Input debounce time Signal extension time Response to short circuit Module monitoring |
| DC operating voltage range | 18 V ... 30 V |
| Nominal operating voltage DC | 24 V |
| Intrinsic current consumption at nominal operating voltage | Typ. 15 mA |
| No. of inputs | 16 |
| Input characteristics | IEC1131-T2 |
| Switching level | Signal 0: ≤ 5 V Signal 1: ≥ 11 V |
| Input switching logic | PNP (positive switching) |
| Input debounce time | 3 ms (0.1 ms, 10 ms, 20 ms parameterizable) |
| Max. residual current of inputs per module | 1.8 A |
| Electrical isolation between channels | no |
| Electrical isolation between channel and internal bus | no |
| Fuse protection (short circuit) | Internal electronic fuse per module |