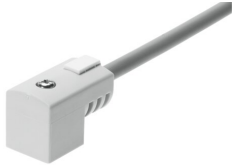


Plug socket with cable KMEB-3-24-2.5

Part number: 547270

FESTO



 General operating condition

Data sheet

Feature	Value
Mounting position	Any
Product weight	120 g
Electrical connection 1	Socket, as per EN 175301-803, form C
Electrical connection 1, design	Rectangular
Electrical connection 1, connection type	Socket
Electrical connection 1, cable outlet	Angled
Electrical connection 1, information on cable outlet	90°
Electrical connection 1, number of pins/wires	2
Electrical connection 1, type of mounting	On air solenoid valve with M2.5 central screw
Electrical connection 2, connection technology	Open end
Electrical connection 2, number of pins/wires	2
Nominal operating voltage DC	24 V
Reverse polarity protection	for all electrical connections
Protective earth connection	Not available
Cable length	2.5 m
Cable characteristic	Standard
Cable diameter	5.2 mm
Cable design	2 x 0.75 mm ²
Wire ends	Cable end sleeve
Degree of protection	IP65 as per IEC 60529
Ambient temperature	-20 °C ... 80 °C
CE marking (see declaration of conformity)	As per EU RoHS directive
UKCA marking (see declaration of conformity)	To UK RoHS instructions
LABS (PWIS) conformity	VDMA24364-B2-L
Contamination level	3
Corrosion resistance class (CRC)	1 - Low corrosion stress
Material of cable sheath	PVC
Housing material	PC
Seals material	NBR
Material of pin contacts	Copper alloy, silver-plated