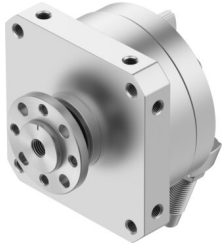


Rotary actuator DSM-40-270-CC-FW-A-B

Part number: 547589

FESTO



 General operating condition

Data sheet

Feature	Value
Size	40
Cushioning angle	16 deg
Adjustment range of swivel angle	0 deg ... 240 deg
Swivel angle	0 deg ... 240 deg
Permissible stop radius	≥40 mm
Cushioning	Pneumatic shock absorber at both ends
Mounting position	Any
Precision adjustment	-6 deg
Mode of operation	Double-acting
Structural design	Rotary vane
Position sensing	For proximity sensor
Symbol	00991265
Operating pressure	0.15 MPa ... 1 MPa
Operating pressure	1.5 bar ... 10 bar
Max. swivel frequency at 6 bar	0.7 Hz
Repetition accuracy	0.1 deg
Operating medium	Compressed air as per ISO 8573-1:2010 [7:-:-]
Information on operating and pilot media	Operation with oil lubrication possible (required for further use)
Corrosion resistance class (CRC)	0 - No corrosion stress
LABS (PWIS) conformity	VDMA24364-B1/B2-L
Ambient temperature	-10 °C ... 60 °C
Max. stop force	650 N
Max. axial force	120 N
Max. radial force	350 N
Theoretical torque at 6 bar	20 Nm
Permissible mass moment of inertia	0.11 kgm ²
Product weight	2935 g
Type of mounting	With internal thread
Pneumatic connection	G1/8
Note on materials	RoHS-compliant
Drive shaft material	Steel Nickel-plated
Seals material	TPE-U(PU)
Housing material	Aluminum, anodized