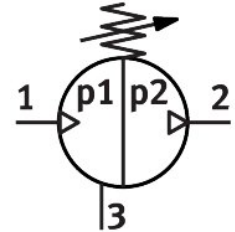


# Pressure booster DPA-100-16-A

Part number: 549402

FESTO



 General operating condition

## Data sheet

| Feature                                  | Value   |
|--|---|
| Piston diameter                          | 100 mm  |
| Mounting position                        | Any   |
| Structural design                        | with piston magnet  |
| Symbol                                   | 00991432  |
| Pressure gauge                           | G1/4 prepared   |
| Output pressure 2                        | 0.4 MPa ... 1.6 MPa   |
| Outlet pressure 2                        | 4 bar ... 16 bar  |
| Output pressure 2                        | 58 psi ... 232 psi  |
| Operating pressure                       | 0.2 MPa ... 1 MPa   |
| Operating pressure                       | 2 bar ... 10 bar  |
| Operating pressure                       | 29 psi ... 145 psi  |
| Pressure regulation range MPa            | 0.4 MPa ... 1.6 MPa   |
| Pressure regulation range                | 4 bar ... 16 bar  |
| Pressure regulation range psi            | 58 psi ... 232 psi  |
| Inlet pressure 1                         | 2 bar ... 10 bar  |
| Inlet pressure 1 MPa                     | 0.2 MPa ... 1 MPa   |
| Inlet pressure 1 psi                     | 29 psi ... 145 psi  |
| Information on pressure regulation range | If the controller spring is tensioned to the maximum, the maximum output pressure may be exceeded by 40%. |
| Operating medium                         | Compressed air as per ISO 8573-1:2010 [7:3:4]   |
| Information on operating and pilot media | Operation with oil lubrication not possible   |
| Corrosion resistance class (CRC)         | 2 - Moderate corrosion stress   |
| LABS (PWIS) conformity                   | VDMA24364-B1/B2-L   |
| Storage temperature                      | 5 °C ... 60 °C  |
| Ambient temperature                      | 5 °C ... 60 °C  |
| Product weight                           | 13000 g   |
| Type of mounting                         | With internal thread  |
| Pneumatic connection 1                   | G1/2  |
| Pneumatic connection 2                   | G1/2  |
| Pneumatic connection 3                   | G1/2  |
| Note on materials                        | RoHS-compliant  |