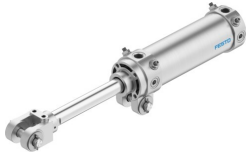


Hinge cylinder DWA-50-100-Y

Part number: 549545

FESTO



 General operating condition

Data sheet

Feature	Value
Stroke	100 mm
Piston diameter	50 mm
Piston rod thread	M16x1.5
Wide rod clevis/swivel mounting	16 mm
Cushioning	Pneumatic cushioning, adjustable at both ends
Mounting position	Any
Structural design	Piston Piston rod with rod clevis Swivel mounting on bearing cap Cylinder barrel
Velocity control	Integrated flow control at both ends
Position sensing	None
Piston rod end	External thread with rod clevis
Operating pressure	1 bar ... 10 bar
Mode of operation	Double-acting
Operating medium	Compressed air as per ISO 8573-1:2010 [7:4:4]
Information on operating and pilot media	Operation with oil lubrication possible (required for further use)
Corrosion resistance class (CRC)	0 - No corrosion stress
LABS (PWIS) conformity	VDMA24364-B2-L
Ambient temperature	-10 °C ... 60 °C
Impact energy in the end positions	0.7 J
Cushioning length	20 mm
Theoretical force at 6 bar, retracting	990 N
Theoretical force at 6 bar, advancing	1178 N
Moving mass at 0 mm stroke	664 g
Additional moving mass per 10 mm stroke	25 g
Basic weight with 0 mm stroke	1338 g
Additional weight per 10 mm stroke	37 g
Alternative connections	See product drawing
Type of mounting	With swivel mounting on bearing cap With accessories
Pneumatic connection	Rc1/4
Rod clevis material	Cast steel Tempered steel
Note on materials	RoHS-compliant
Wiper material	Bronze

Feature	Value
Cover material	Die-cast aluminum Anodized
Seals material	NBR
Piston rod material	Tempered steel Hard-chrome-plated
Material of cylinder barrel	Wrought aluminum alloy Anodized