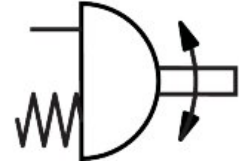



# Quarter turn actuator DAPS-0360-090-RS3-F1012

Part number: 549675

FESTO



 [General operating condition](#)

## Data sheet

Feature	Value
Size of valve actuator	0360
Flange hole pattern	F10 F12
Swivel angle	90 deg
End-position adjusting range at 0°	-1 deg ... 9 deg
End-position adjusting range at nominal swivel angle	81 deg ... 91 deg
Depth shaft connection	29.5 mm
Information on the end-position adjusting range	One end position optionally adjustable
Standard connection for valve	ISO 5211
Cushioning	No cushioning
Mounting position	Any
Mode of operation	Single-acting
Structural design	Kinematic yoke system
Position sensing	None
Closing direction	Closes to the right
Symbol	00991266
Valve connection conforms to standard	VDI/VDE 3845 (NAMUR)
Safety integrity level (SIL)	Up to SIL 2 low demand mode
Connection pressure for spring force	0.42 MPa
Connection pressure for spring force	4.2 bar
Operating pressure	0.42 MPa ... 0.84 MPa
Operating pressure	4.2 bar ... 8.4 bar
Nominal operating pressure	0.56 MPa
Nominal operating pressure	5.6 bar
Max. swivel frequency at 6 bar	1 Hz
CE marking (see declaration of conformity)	as per EU explosion protection directive (ATEX)
UKCA marking (see declaration of conformity)	acc. to UK EX instructions
Explosion prevention and protection	Zone 1 (ATEX) Zone 2 (ATEX) Zone 21 (ATEX) Zone 22 (ATEX)
Certificate issuing authority	German Technical Control Board North (TÜV Nord) 212170801
ATEX category gas	II 2G
ATEX category for dust	II 2D
Type of ignition protection for gas	Ex h IIC T6...T3 Gb X
Type of (ignition) protection for dust	Ex h IIIC T85°C...T200°C Db X

Feature	Value
Explosive ambient temperature	-20°C ≤ Ta ≤ +60°C
Operating medium	Compressed air as per ISO 8573-1:2010 [7:4:4]
Information on operating and pilot media	Operation with oil lubrication possible (required for further use)
Corrosion resistance class (CRC)	3 - High corrosion stress
LABS (PWIS) conformity	VDMA24364-B1/B2-L
Ambient temperature	-20 °C ... 80 °C
Torque at nominal operating pressure and 0° swivel angle	420 Nm
Torque at nominal operating pressure and 50° swivel angle	225 Nm
Torque at nominal operating pressure and 90° swivel angle	330 Nm
Note about the torque	The actuator's operating torque must not be higher than the maximum permissible torque listed in ISO 5211, based on the size of the mounting flange and the coupling.
Spring return torque at 0° swivel angle	180 Nm
Spring return torque with 50° swivel angle	135 Nm
Spring return torque with 90° swivel angle	270 Nm
Spring force	3
Air consumption at 6 bar per cycle 0°-nominal swivel angle-0°	14 l
Product weight	16500 g
Shaft connection	T27
Pneumatic connection	G1/4
Note on materials	RoHS compliant
Cover material	Wrought aluminum alloy
Seals material	FPM NBR PUR
Housing material	Wrought aluminum alloy
Material of screws	High-alloy steel
Shaft material	High-alloy steel
Material number for shaft	1,4305