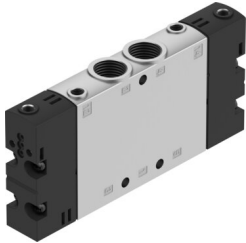


# Basic valve CPE18-P1-5J-1/4

Part number: 550155

FESTO



[PDF General operating condition](#)

## Data sheet

| Feature   | Value  |
|---|--|
| Valve function                                    | 5/2, bistable  |
| Actuation type                                    | Via ISO 15218 pilot control interface  |
| Width   | 18 mm  |
| Normal nominal flow rate (normalized to DIN 1343) | 1500 l/min   |
| Pneumatic working port                            | G1/4   |
| Operating pressure                                | 0.2 MPa ... 1 MPa  |
| Operating pressure                                | 2 bar ... 10 bar   |
| Structural design                                 | Piston gate valve  |
| Certification                                     | c UL us - Recognized (OL)  |
| Maritime classification                           | See certificate  |
| CE marking (see declaration of conformity)        | As per EU low voltage directive  |
| UKCA marking (see declaration of conformity)      | To UK instructions for electrical equipment  |
| Certificate issuing authority                     | DNV-TAA000032X<br>UL MH19482   |
| Nominal width                                     | 8 mm   |
| Exhaust air function                              | With flow control option   |
| Sealing principle                                 | Soft   |
| Mounting position                                 | Any  |
| Manual override                                   | Non-detenting  |
| Type of control                                   | Pilot-controlled   |
| Pilot air supply port                             | Internal   |
| Flow direction                                    | Non-reversible   |
| Symbol  | 00991013   |
| Valve position ID                                 | Label holder   |
| Lap   | Overlap  |
| Changeover time                                   | 15 ms  |
| Duty cycle  | 100%   |
| Max. positive test pulse with 0 signal            | 3300 µs  |
| Max. negative test pulse on 1 signal              | 3100 µs  |
| Permissible voltage fluctuations                  | -15 % / +10 %  |
| Operating medium                                  | Compressed air as per ISO 8573-1:2010 [7:4:4]  |
| Information on operating and pilot media          | Operation with oil lubrication possible (required for further use)                   |
| Vibration resistance                              | Transport application test with severity level 2 as per FN 942017-4 and EN 60068-2-6 |
| Shock resistance                                  | Shock test with severity level 2 as per FN 942017-5 and EN 60068-2-27                |
| Corrosion resistance class (CRC)                  | 2 - Moderate corrosion stress  |

| <b>Feature</b>            | <b>Value</b>      |
|---------------------------|-------------------|
| LABS (PWIS) conformity    | VDMA24364-B1/B2-L |
| Temperature of medium     | -5 °C ... 50 °C   |
| Ambient temperature       | -5 °C ... 50 °C   |
| Product weight            | 190 g             |
| Type of mounting          | With through-hole |
| Pilot exhaust air port 82 | M5                |
| Pilot exhaust air port 84 | M5                |
| Pilot air port 12         | M5                |
| Pilot air port 14         | M5                |
| Pneumatic connection 1    | G1/4              |
| Pneumatic connection 2    | G1/4              |
| Pneumatic connection 3    | G1/4              |
| Pneumatic connection 4    | G1/4              |
| Pneumatic connection 5    | G1/4              |
| Note on materials         | RoHS-compliant    |
| Seals material            | NBR               |
| Housing material          | Die-cast aluminum |