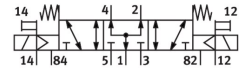


# Basic valve CPE18-P1-5/3BS-1/4

Part number: 550162

FESTO



[General operating condition](#)

## Data sheet

| Feature   | Value  |
|---|--|
| Valve function                                    | 5/3, pressurized   |
| Actuation type                                    | Via ISO 15218 pilot control interface                              |
| Width   | 18 mm  |
| Normal nominal flow rate (normalized to DIN 1343) | 1300 l/min   |
| Pneumatic working port                            | G1/4   |
| Operating pressure                                | -0.09 MPa ... 1 MPa  |
| Operating pressure                                | -0.9 bar ... 10 bar  |
| Structural design                                 | Piston gate valve  |
| Reset method                                      | Mechanical spring  |
| Certification                                     | c UL us - Recognized (OL)  |
| Maritime classification                           | See certificate  |
| CE marking (see declaration of conformity)        | As per EU low voltage directive                                    |
| UKCA marking (see declaration of conformity)      | To UK instructions for electrical equipment                        |
| Certificate issuing authority                     | DNV-TAA000032X<br>UL MH19482                                       |
| Nominal width                                     | 8 mm   |
| Exhaust air function                              | With flow control option   |
| Sealing principle                                 | Soft   |
| Mounting position                                 | Any  |
| Manual override                                   | Non-detenting  |
| Type of control                                   | Pilot-controlled   |
| Pilot air supply port                             | External   |
| Flow direction                                    | Reversible   |
| Symbol  | 00991031   |
| Valve position ID                                 | Label holder   |
| Lap   | Overlap  |
| Pilot pressure MPa                                | 0.25 MPa ... 1 MPa   |
| Pilot pressure                                    | 2.5 bar ... 10 bar   |
| Switching time off                                | 34 ms  |
| On switching time                                 | 20 ms  |
| Duty cycle  | 100%   |
| Max. positive test pulse with 0 signal            | 3300 µs  |
| Max. negative test pulse on 1 signal              | 3100 µs  |
| Permissible voltage fluctuations                  | -15 % / +10 %  |
| Operating medium                                  | Compressed air as per ISO 8573-1:2010 [7:4:4]                      |
| Information on operating and pilot media          | Operation with oil lubrication possible (required for further use) |

| Feature                          | Value  |
|----------------------------------|--|
| Vibration resistance             | Transport application test with severity level 2 as per FN 942017-4 and EN 60068-2-6 |
| Shock resistance                 | Shock test with severity level 2 as per FN 942017-5 and EN 60068-2-27                |
| Corrosion resistance class (CRC) | 2 - Moderate corrosion stress  |
| LABS (PWIS) conformity           | VDMA24364-B1/B2-L  |
| Temperature of medium            | -5 °C ... 50 °C  |
| Pilot medium                     | Compressed air as per ISO 8573-1:2010 [7:4:4]  |
| Ambient temperature              | -5 °C ... 50 °C  |
| Product weight                   | 200 g  |
| Type of mounting                 | With through-hole  |
| Pilot exhaust air port 82        | M5   |
| Pilot exhaust air port 84        | M5   |
| Pilot air port 12                | M5   |
| Pilot air port 14                | M5   |
| Pneumatic connection 1           | G1/4   |
| Pneumatic connection 2           | G1/4   |
| Pneumatic connection 3           | G1/4   |
| Pneumatic connection 4           | G1/4   |
| Pneumatic connection 5           | G1/4   |
| Note on materials                | RoHS-compliant   |
| Seals material                   | NBR  |
| Housing material                 | Die-cast aluminum  |