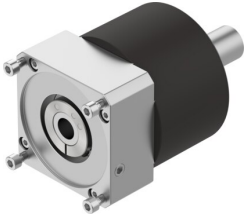


Gear unit EMGA-160-P-G5-SAS-140

Part number: 552201

FESTO



 [General operating condition](#)

Data sheet

Feature	Value
Gearbox flange size	160 mm
Motor flange size	140 mm
Torsional backlash	0.1 deg
Gearbox type	Planetary gear
Gear ratio	5:1
Max. actuator speed	6500 rpm
Gearbox operating temperature	-25 °C ... 90 °C
LABS (PWIS) conformity	VDMA24364-B2-L
Degree of protection	IP54
Continuous output torque	450 Nm
Mass moment of inertia, gearbox	6.07 kgcm ²
Max. output torque	720 Nm
Max. efficiency	98 %
Torsional rigidity	38 Nm/arcmin
Product weight	18000 g
Permissible axial shaft load	7000 N
Permissible radial shaft load	5000 N
Gearbox interface, output shaft	160G
Gearbox interface, actuator	140A
Note on materials	RoHS-compliant