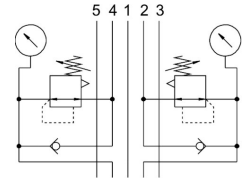
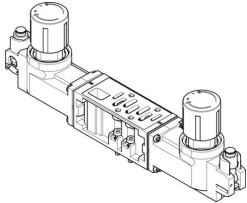


# Regulator plate VABF-S1-2-R4C2-C-6

Part number: 555763

FESTO



 General operating condition

## Data sheet

| Feature                                  | Value  |
|--|--|
| Width                                    | 54 mm  |
| Based on norm                            | ISO 5599-1   |
| Mounting position                        | Any  |
| Pneumatic vertical stacking              | Pressure regulator for 2 and 4                                     |
| Controller function                      | Outlet pressure constant<br>With secondary exhausting              |
| Symbol                                   | 00991935   |
| Optional pressure gauge                  | Possible   |
| Pressure regulation range MPa            | 0.1 MPa ... 0.6 MPa  |
| Pressure regulation range                | 1 bar ... 6 bar  |
| Pressure regulation range psi            | 14.5 psi ... 87 psi  |
| Inlet pressure 1                         | 0.5 bar ... 10 bar   |
| Inlet pressure 1 MPa                     | 0.05 MPa ... 1 MPa   |
| Inlet pressure 1 psi                     | 7.25 psi ... 145 psi   |
| Operating medium                         | Compressed air as per ISO 8573-1:2010 [7:4:4]                      |
| Information on operating and pilot media | Operation with oil lubrication possible (required for further use) |
| Corrosion resistance class (CRC)         | 0 - No corrosion stress  |
| LABS (PWIS) conformity                   | VDMA24364-B1/B2-L  |
| Degree of protection                     | IP65<br>NEMA 4   |
| Ambient temperature                      | -5 °C ... 50 °C  |
| Product weight                           | 1990 g   |
| Vertical stacking mounting type          | On manifold sub-base<br>On individual sub-base                     |
| Pressure gauge connection                | With retaining clamp   |
| Note on materials                        | RoHS-compliant   |
| Material of operator panel               | PA   |
| Controller housing material              | Die-cast aluminum  |