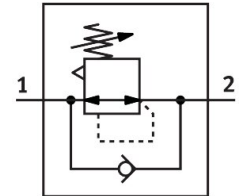


Pressure regulator MS9-LR

Part number: 562530

FESTO



General operating condition

Data sheet

Overall data sheet – Individual values depend upon your configuration.

Feature	Value
Size	9
Series	MS
Actuator lock	Rotary knob with detent Rotary knob with integrated lock can be closed with accessories
Mounting position	Any Preferably vertical
Structural design	Directly controlled diaphragm regulator Pilot-controlled diaphragm regulator Pilot-controlled piston control valve
Controller function	Outlet pressure constant With primary pressure compensation With secondary exhausting With return flow function Without secondary exhaust
Symbol	00991533 00991536 00991900 00995303
Pressure gauge	G1/4 prepared G1/8 prepared Red-green scale with pressure sensor with pressure gauge with switch indicator
Operating pressure	1 bar ... 20 bar
Pressure regulation range	0.1 bar ... 16 bar
Max. pressure hysteresis	0.05 bar ... 0.4 bar
Max. standard flow rate	32000 l/min
Normal nominal flow rate (normalized to DIN 1343)	11000 l/min ... 30000 l/min
DC operating voltage range	21.6 V ... 26.4 V
Max. electrical power consumption	4.2 W
Max. current consumption	0.16 A
Nominal operating voltage DC	24 V
Residual ripple	10 %
Analog input signal range	0 - 10 V 4 - 20 mA
Certification	c UL us - Recognized (OL)

Feature	Value
CE marking (see declaration of conformity)	as per EU explosion protection directive (ATEX)
UKCA marking (see declaration of conformity)	acc. to UK EX instructions
Explosion protection certification outside the EU	EPL Db (GB) EPL Gb (GB)
Explosion prevention and protection	Zone 1 (ATEX) Zone 1 (UKEX) Zone 2 (ATEX) Zone 21 (ATEX) Zone 21 (UKEX) Zone 22 (ATEX)
ATEX category gas	II 2G
ATEX category for dust	II 2D
Type of ignition protection for gas	Ex h IIC T6 Gb X
Type of (ignition) protection for dust	Ex h IIIC T60°C Db X
Explosive ambient temperature	-10°C ≤ Ta ≤ +60°C
Operating medium	Compressed air as per ISO 8573-1:2010 [7:4:4] Inert gas
Information on operating and pilot media	Operation with oil lubrication possible (required for further use) Operation with oil lubrication not possible
Corrosion resistance class (CRC)	2 - Moderate corrosion stress
LABS (PWIS) conformity	VDMA24364-B1/B2-L
Cleanroom suitability, measured according to ISO 14644-14	Class 7 according to ISO 14644-1
Storage temperature	-10 °C ... 60 °C
Temperature of medium	-10 °C ... 60 °C
Ambient temperature	-10 °C ... 60 °C
Product weight	1400 g
Type of mounting	With accessories
Covering material	PA-reinforced
Note on materials	RoHS-compliant
Material of sub-base	Die-cast aluminum
Material of mounting bracket	Die-cast aluminum
Housing material	Die-cast aluminum
Module connector material	Die-cast aluminum
Diaphragm material	NBR
Valve tappet material	Wrought aluminum alloy NBR POM