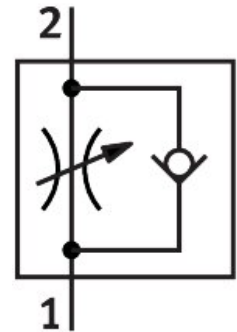



One-way flow control valve GRLA-10-32-UNF-QB-5/32-U

Part number: 564840

FESTO



 [General operating condition](#)

Data sheet

Feature	Value
Valve function	Exhaust air flow control non-return function
Pneumatic connection 1	QB-5/32
Pneumatic connection 2	10-32 UNF-2A
Actuation type	Manual
Adjusting element	Slotted screw
Type of mounting	Screw-in With external thread
Standard nominal flow rate in flow control direction	216.1 l/min
Standard nominal flow rate in non-return direction	166.525 l/min ... 219.915 l/min
Ambient temperature	0 °C ... 60 °C
Mounting position	Any
Symbol	00991452
Operating pressure for entire temperature range	-0.951 bar ... 7.998 bar
Standard flow rate in flow control direction 6 → 0 bar	381.4 l/min
Standard flow rate in non-return direction at 6 → 0 bar	381.356 l/min ... 399.153 l/min
Operating medium	Compressed air as per ISO 8573-1:2010 [7:4:4]
Information on operating and pilot media	Operation with oil lubrication possible (required for further use)
LABS (PWIS) conformity	VDMA24364 zone III
Temperature of medium	0 °C ... 60 °C
Max. tightening torque	1.491 Nm
Product weight	9.922 g
Material of screwed plug	Brass Nickel-plated
Note on materials	RoHS-compliant
Seals material	NBR
Hollow bolt material	Brass Nickel-plated
Releasing ring material	POM
Knurled head material	Brass Nickel-plated

Feature	Value
Material of adjusting screw	Brass Nickel-plated
Swivel joint material	PBT-reinforced