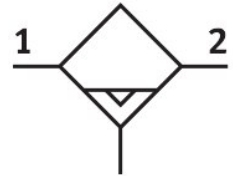


# Water trap MS6-LWS-1/4-U-V

Part number: 564868

FESTO



 General operating condition

## Data sheet

Feature	Value
Size	6
Series	MS
Mounting position	Vertical +/- 5°
Condensate drain	Fully automatic
Structural design	Centrifugal separator
Max. condensate volume	38 ml
Bowl guard	Integrated as metal bowl guard
Degree of condensate separation	99 %
Symbol	00992244
Operating pressure	2 bar ... 12 bar
Normal nominal flow rate (normalized to DIN 1343)	2400 l/min
Operating medium	Compressed air as per ISO 8573-1:2010 [7:-:-] Inert gas
Corrosion resistance class (CRC)	2 - Moderate corrosion stress
LABS (PWIS) conformity	VDMA24364-B1/B2-L
For use in the food industry	See supplementary material information
Air quality class at the output	Compressed air as per ISO 8573-1:2010 [7:7:4]
Temperature of medium	-10 °C ... 60 °C
Ambient temperature	-10 °C ... 60 °C
Product weight	820 g
Type of mounting	With accessories
Pneumatic connection 1	G1/4
Pneumatic connection 2	G1/4
Note on materials	RoHS-compliant
Seals material	NBR
Housing material	Die-cast aluminum
Material of bowl	Wrought aluminum alloy
Inspection window material	PA