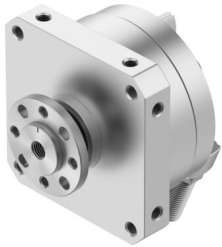


Rotary actuator DSM-40-270-P1-FW-A-B

Part number: 566212

FESTO



 General operating condition

Data sheet

| Feature | Value |
|--|--|
| Size | 40 |
| Cushioning angle | 6.5 deg |
| Adjustment range of swivel angle | 0 deg ... 240 deg |
| Swivel angle | 0 deg ... 240 deg |
| Permissible stop radius | ≥40 mm |
| Cushioning | Elastic cushioning rings/pads at both ends with fixed stop |
| Mounting position | Any |
| Precision adjustment | -6 deg |
| Mode of operation | Double-acting |
| Structural design | Rotary vane |
| Position sensing | For proximity sensor |
| Symbol | 00991265 |
| Operating pressure | 0.15 MPa ... 1 MPa |
| Operating pressure | 1.5 bar ... 10 bar |
| Max. swivel frequency at 6 bar | 2 Hz |
| Repetition accuracy | 0.1 deg |
| Operating medium | Compressed air as per ISO 8573-1:2010 [7:-:-] |
| Information on operating and pilot media | Operation with oil lubrication possible (required for further use) |
| Corrosion resistance class (CRC) | 0 - No corrosion stress |
| LABS (PWIS) conformity | VDMA24364-B1/B2-L |
| Ambient temperature | -10 °C ... 60 °C |
| Max. stop force | 650 N |
| Max. axial force | 120 N |
| Max. radial force | 350 N |
| Theoretical torque at 6 bar | 20 Nm |
| Permissible mass moment of inertia | 0.105 kgm ² |
| Product weight | 3005 g |
| Type of mounting | With internal thread |
| Pneumatic connection | G1/8 |
| Note on materials | RoHS-compliant |
| Drive shaft material | Steel Nickel-plated |
| Seals material | TPE-U(PU) |
| Housing material | Aluminum, anodized |