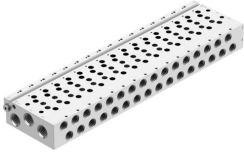


Manifold rail VABM-L1-14W-G14-16

Part number: 566653

FESTO



 [General operating condition](#)

Data sheet

| Feature | Value |
|--|--|
| Width dimension | 16 mm |
| Max. no. of valve positions | 16 |
| Operating pressure | -0.09 MPa ... 1 MPa |
| Operating pressure | -0.9 bar ... 10 bar |
| Certification | RCM compliance mark c UL us - Recognized (OL) |
| Corrosion resistance class (CRC) | 2 - Moderate corrosion stress |
| LABS (PWIS) conformity | VDMA24364-B1/B2-L |
| Max. tightening torque for DIN rail mounting | 1.5 Nm |
| Max. tightening torque for valve mounting | 0.65 Nm |
| Max. tightening torque for wall mounting | 3 Nm |
| Product weight | 1268 g |
| Pilot air port 12/14 | M5 |
| Pilot exhaust air port 82/84 | M5 |
| Pneumatic connection 1 | G1/4 |
| Pneumatic connection 2 | G1/8 |
| Pneumatic connection 3 | G1/4 |
| Pneumatic connection 4 | G1/8 |
| Pneumatic connection 5 | G1/4 |
| Note on materials | RoHS-compliant |
| Manifold rail material | Wrought aluminum alloy |