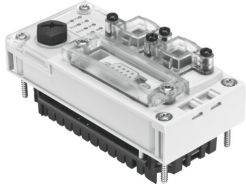


Control block CPX-CEC

Part number: 567346

FESTO



 General operating condition

Data sheet

Feature	Value
Protocol	CODESYS level 2 EasyIP Modbus® TCP TCP/IP
Dimensions W x L x H	50 mm x 107 mm x 55 mm
Product weight	155 g
Ambient temperature	-5 °C ... 50 °C
Storage temperature	-20 °C ... 70 °C
Relative air humidity	95 % Non-condensing
Degree of protection	IP65 IP67
Corrosion resistance class (CRC)	2 - Moderate corrosion stress
LABS (PWIS) conformity	VDMA24364-B2-L
Note on materials	RoHS-compliant
Housing material	PC
LED display (product-specific)	ERR: PLC runtime error M: modify/forcing active PL: load supply PS: electronics supply, sensor supply RUN: PLC status SF: system fault STOP: PLC status
LED display (bus-specific)	TP: link/traffic
Device-specific diagnostics	Channel-oriented and module-oriented diagnostics Undervoltage/short circuit of modules Diagnostic memory
Control elements	Rotary switch for RUN/Stop
IP address setting	DHCP Via CODESYS Via MMI
Ethernet interface	RJ 45 (socket, 8-pin)
Ethernet, number	1
Ethernet, supported protocols	TCP/IP, EasyIP, Modbus® TCP
Ethernet, connector plug	RJ45 Socket 8-pin
Ethernet, data transmission speed	10/100 Mbit/s
Parameterization	CODESYS V2.3
Baud rate	10/100 bit/s as per IEEE 802.3 (10BaseT) or 802.3u (100BaseTx)

Feature	Value
Configuration support	CODESYS V2.3
Additional functions	RS232 communication function
CPU data	400 MHz processor
Nominal operating voltage DC	24 V
Nominal operating voltage DC load voltage	Without pneumatics: 18 ... 30V 24 V With midi/maxi pneumatic valves types: 21.6 ... 26.4 V With pneumatic type CPA: 20.4 ... 26.4 V With pneumatics type MPA: 18 ... 30 V
Intrinsic current consumption at nominal operating voltage	Typ. 85 mA
Power failure buffering	10 ms
Data interface	RS232 interface Sub-D, 9-pin, socket 9.6 ... 230.4 kBit/s Galvanically isolated
Programming, operating language	DE, EN
Programming language	as per IEC 61131-3 KOP AWL ST FUP AS Additionally CFC
Programming, file handling support	yes
Programming software	CODESYS provided by Festo V2.3
Program memory	4 MB user program
Processing time	Approx. 200 µs/1 k instruction
Function blocks	Read CPX module diagnostics CPX diagnostic status Copy CPX diagnostic trace and others
Flag	8 MB global data memory CODESYS variable concept