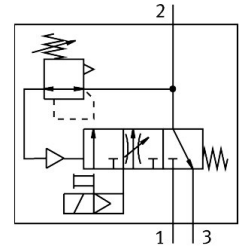



Soft start/quick exhaust valve MS9-SV-G-C-V24-S-VS

Part number: 570737

FESTO



 General operating condition

Data sheet

| Feature | Value |
|---|--|
| Series | MS |
| Size | 9 |
| Width dimension | 90 mm |
| Safety function | Exhausting |
| Performance Level (PL) | Exhaust/up to category 1, performance level c |
| Structural design | Piston gate valve |
| Actuation type | Electrical |
| Sealing principle | Soft |
| Exhaust air function | Without flow control option |
| Manual override | None |
| Reset method | Mechanical spring |
| Type of control | Pilot-controlled |
| Symbol | 00995240 |
| Valve function | 3/2, closed, monostable Pressure build-up function |
| Operating pressure | 0.35 MPa ... 1.6 MPa |
| Operating pressure | 3.5 bar ... 16 bar |
| Normal nominal flow rate (normalized to DIN 1343) | 8300 l/min ... 16550 l/min |
| Standard flow rate exhaust 6→0 bar | 19730 l/min ... 21720 l/min |
| Duty cycle | 100% |
| Coil characteristics | 24 V DC: 8.4 W |
| Nominal operating voltage DC | 24 V |
| Permissible voltage fluctuations | +/- 10 % |
| Operating medium | Compressed air as per ISO 8573-1:2010 [7:4:4] |
| Information on operating and pilot media | Operation with oil lubrication possible (required for further use) |
| Corrosion resistance class (CRC) | 2 - Moderate corrosion stress |
| Note on materials | RoHS-compliant |
| LABS (PWIS) conformity | VDMA24364-B1/B2-L |
| Cleanroom suitability, measured according to ISO 14644-14 | Class 7 according to ISO 14644-1 |
| Noise level | 93 dB(A) |
| Degree of protection | IP65 |
| Temperature of medium | 0 °C ... 60 °C |
| Ambient temperature | 0 °C ... 60 °C |

| Feature | Value |
|--|--|
| Storage temperature | 0 °C ... 60 °C |
| Shock resistance | Shock test with severity level 1 as per FN 942017-5 and EN 60068-2-27 |
| Vibration resistance | Transport application test with severity level 1 as per FN 942017-4 and EN 60068-2-6 |
| CE marking (see declaration of conformity) | As per EU EMC directive as per EU machinery directive As per EU RoHS directive |
| UKCA marking (see declaration of conformity) | To UK instructions for machines To UK RoHS instructions |
| Type of mounting | Optionally: Line installation With accessories |
| Mounting position | Any |
| Product weight | 3200 g |
| Pressure gauge connection | G1/8 G1/4 |
| Pneumatic connection 3 | G1 1 NPT |
| Electrical connection | Form A Plug as per EN 175301-803 Rectangular design |
| Housing material | Die-cast aluminum |
| Seals material | NBR |
| Piston slide material | Brass |
| Cover material | Wrought aluminum alloy |
| Lower cover material | PA |