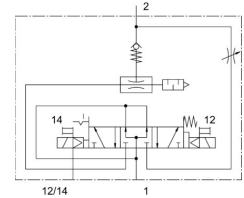
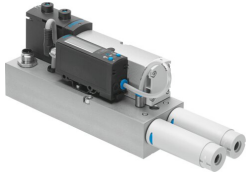



Vacuum generator VABF-S4-1-V2B1-C-VH-20

Part number: 571425

FESTO



 General operating condition

Data sheet

Feature	Value
Nominal width of Laval nozzle	2 mm
Muffler construction type	Open
Reverse polarity protection	for all electrical connections
Mounting position	Any
Ejector characteristics	High vacuum Standard
Manual override	Detenting Non-detenting Covered
Structural design	Non-modular
Short-circuit protection	yes
Measured variable	Relative pressure
Measuring principle	Piezoresistive
Switching function	Threshold value comparator
Integrated function	Ejector pulse valve, electric Flow control On/off valve, electric Air saving function, electrical Non-return valve Pneumatic muffler open Vacuum switch
Symbol	00995768
Valve function	5/3, pressurized
Switching element function	N/O contact
Setting range hysteresis	-0.9 bar ... 0 bar
Setting range threshold value	-0.999 bar ... 0 bar
Operating pressure	4 bar ... 8 bar
Nominal operating pressure	6 bar
DC operating voltage range	21.6 V ... 26.4 V
Inductive protective circuit	Adapted to MZ, MY and ME coils
Idle current	50 mA ... 150 mA
Max. output current	50 mA
Duty cycle	100%
Voltage drop	≤1.5 V
Coil characteristics	24 V DC: 1.3 W
Overload protection	Available

Feature	Value
Operating medium	Compressed air as per ISO 8573-1:2010 [7:4:4]
Information on operating and pilot media	Operation with oil lubrication not possible
Corrosion resistance class (CRC)	0 - No corrosion stress
LABS (PWIS) conformity	VDMA24364 zone III
Temperature of medium	0 °C ... 50 °C
Noise level	78 dB(A)
Degree of protection	IP65
Ambient temperature	0 °C ... 50 °C
Product weight	1120 g
Pressure measuring range	-1 bar ... 0 bar
Accuracy in ± % FS	3 %FS
Type of mounting	On sub-base
Pneumatic connection 1	Sub-base, size 26 mm as per ISO 15407-2
Pneumatic connection 3	Sub-base, size 26 mm as per ISO 15407-2
Note on materials	RoHS-compliant
Seals material	NBR
Housing material	Wrought aluminum alloy
Material of screws	Steel Galvanized
Material of plug housing	Die-cast zinc Nickel-plated
Material of pin contacts	Brass Gold-plated
Inspection window material	PA
Material of keypad	TPE-U