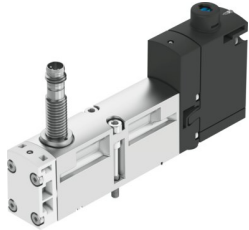


# Air solenoid valve VSVA-B-M52-MZD-A2-1T1L-ANP

FESTO

Part number: 573203



[PDF General operating condition](#)

## Data sheet

| Feature   | Value   |
|---|---|
| Valve function                                    | 5/2, monostable   |
| Actuation type                                    | Electrical  |
| Width   | 18 mm   |
| Normal nominal flow rate (normalized to DIN 1343) | 550 l/min   |
| Pneumatic working port                            | Sub-base, size 18 mm according to ISO 15407-2<br>G1/8                     |
| Operating voltage                                 | 24V DC  |
| Operating pressure                                | -0.09 MPa ... 1 MPa   |
| Operating pressure                                | -0.9 bar ... 10 bar   |
| Structural design                                 | Piston gate valve   |
| Reset method                                      | Mechanical spring   |
| KC characters                                     | KC EMC  |
| CE marking (see declaration of conformity)        | As per EU EMC directive   |
| UKCA marking (see declaration of conformity)      | To UK instructions for EMC  |
| Degree of protection                              | IP65<br>NEMA 4  |
| Nominal width                                     | 5 mm  |
| Exhaust air function                              | With flow control option<br>Via throttle plate<br>Via individual sub-base |
| Sealing principle                                 | Soft  |
| Mounting position                                 | Any   |
| Manual override                                   | Detenting<br>Non-detenting<br>Covered                                     |
| Type of control                                   | Pilot-controlled  |
| Pilot air supply port                             | External<br>Internal  |
| Flow direction                                    | Non-reversible  |
| Symbol  | 00997392  |
| Measuring principle                               | Inductive   |
| Lap   | Overlap   |
| Sensor reverse polarity protection                | For all electrical connections  |
| Signal status display                             | LED   |
| Switching position sensing                        | Normal position with sensor   |
| Sensor switching status indication                | LED   |
| Pilot pressure MPa                                | 0.3 MPa ... 1 MPa   |
| Pilot pressure                                    | 3 bar ... 10 bar  |

| Feature   | Value  |
|---|--|
| Flow rate of pneumatic valve  | 750 l/min  |
| Flow rate of pneumatic valve on individual sub-base                     | 600 l/min  |
| Optimized flow rate of pneumatic valve, pneumatically concatenated flow | 700 l/min  |
| Optimized flow rate of pneumatic valve pneumatically concatenated flow  | 550 l/min  |
| Switching time off  | 38 ms  |
| On switching time   | 12 ms  |
| Pneumatic valve - sensor ON switching time                              | 32 ms  |
| Pneumatic valve - sensor switching time off                             | 9 ms   |
| Duty cycle  | 100%   |
| Max. positive test pulse with 0 signal                                  | 1500 µs  |
| Max. negative test pulse on 1 signal                                    | 800 µs   |
| Nominal operating voltage DC  | 24 V   |
| Switching output  | NPN  |
| Coil characteristics  | 24 V DC: 1.6 W   |
| Surge resistance  | 2.5 kV   |
| Contamination level   | 3  |
| Permissible voltage fluctuations  | +/- 10 %   |
| Operating medium  | Compressed air as per ISO 8573-1:2010 [7:4:4]  |
| Information on operating and pilot media                                | Operation with oil lubrication possible (required for further use)                   |
| Vibration resistance  | Transport application test with severity level 2 as per FN 942017-4 and EN 60068-2-6 |
| Shock resistance  | Shock test with severity level 2 as per FN 942017-5 and EN 60068-2-27                |
| Corrosion resistance class (CRC)  | 0 - No corrosion stress  |
| LABS (PWIS) conformity  | VDMA24364-B1/B2-L  |
| Temperature of medium   | -5 °C ... 50 °C  |
| Relative air humidity   | 0 - 90 %   |
| Noise level   | 85 dB(A)   |
| Ambient temperature   | -5 °C ... 50 °C  |
| Max. tightening torque for valve mounting                               | 0,8 Nm ... 1.2 Nm  |
| Product weight  | 140 g  |
| DC sensor operating voltage range                                       | 10 V ... 30 V  |
| Sensor short circuit protection   | Pulsed   |
| Sensor idle current   | ≤10 mA   |
| Max. output current, sensor   | 200 mA   |
| Sensor max. switching frequency   | 5000 Hz  |
| Sensor residual ripple  | ± 10 %   |
| Sensor voltage drop   | ≤2 V   |
| Electrical connection   | 4-pin<br>Plug<br>as per ISO 15407-2  |
| Sensor connection   | Plug<br>3-pin<br>M8x1  |
| Type of mounting  | On sub-base  |
| Pilot air port 12/14  | Sub-base, size 18 mm as per ISO 15407-2  |
| Pilot exhaust air port 82/84  | Ducted<br>Not ducted<br>Optionally:  |
| Pneumatic connection 1  | Sub-base, size 18 mm as per ISO 15407-2  |
| Pneumatic connection 2  | Sub-base, size 18 mm as per ISO 15407-2  |
| Pneumatic connection 3  | Sub-base, size 18 mm as per ISO 15407-2  |
| Pneumatic connection 4  | Sub-base, size 18 mm as per ISO 15407-2  |
| Pneumatic connection 5  | Sub-base, size 18 mm as per ISO 15407-2  |
| Note on materials   | RoHS-compliant   |

| <b>Feature</b>             | <b>Value</b>            |
|----------------------------|-------------------------|
| Seals material             | FPM<br>NBR              |
| Housing material           | Die-cast aluminum<br>PA |
| Material of screws         | Steel, galvanized       |
| Switching element function | N/C contact             |