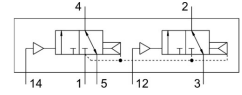


Pneumatic valve VUWG-L10-T32C-A-M5

Part number: 573805

FESTO



[PDF General operating condition](#)

Data sheet

Feature	Value
Valve function	2x3/2, closed, monostable
Actuation type	Pneumatic
Valve size	10 mm
Normal nominal flow rate (normalized to DIN 1343)	150 l/min
Pneumatic working port	M5
Operating pressure	1.5 bar ... 10 bar
Structural design	Piston gate valve
Reset method	Pneumatic spring
Width dimension	10.5 mm
Exhaust air function	With flow control option
Sealing principle	Soft
Mounting position	Any
Manual override	None
Type of control	Direct
Flow direction	Reversible with restrictions
Symbol	00992930
Lap	Overlap
Pilot pressure	1.5 bar ... 10 bar
Suitability for vacuum	no
Switching time off	9 ms
On switching time	4 ms
Operating medium	Compressed air as per ISO 8573-1:2010 [7:4:4]
Information on operating and pilot media	Operation with oil lubrication possible (required for further use)
Corrosion resistance class (CRC)	2 - Moderate corrosion stress
LABS (PWIS) conformity	VDMA24364-B1/B2-L
Cleanroom suitability, measured according to ISO 14644-14	Class 5 according to ISO 14644-1
Temperature of medium	-5 °C ... 50 °C
Pilot medium	Compressed air as per ISO 8573-1:2010 [7:4:4]
Ambient temperature	-5 °C ... 60 °C
Product weight	48 g
Type of mounting	On PR rail With through-hole
Pilot air port 12	M5
Pilot air port 14	M5
Pneumatic connection 1	M5
Pneumatic connection 2	M5

Feature	Value
Pneumatic connection 3	M5
Pneumatic connection 4	M5
Pneumatic connection 5	M5
Note on materials	RoHS-compliant
Seals material	HNBR NBR
Housing material	Anodized