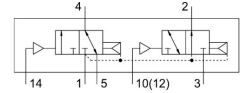


# Pneumatic valve VUWG-L10-T32H-A-M7

Part number: 573823

FESTO



[PDF General operating condition](#)

## Data sheet

| Feature   | Value  |
|---|--|
| Valve function  | 2x3/2, open/closed, monostable                                     |
| Actuation type  | Pneumatic  |
| Valve size  | 10 mm  |
| Normal nominal flow rate (normalized to DIN 1343)         | 190 l/min  |
| Pneumatic working port                                    | M7   |
| Operating pressure  | 1.5 bar ... 10 bar   |
| Structural design   | Piston gate valve  |
| Reset method  | Pneumatic spring   |
| Width dimension   | 10.5 mm  |
| Exhaust air function                                      | With flow control option   |
| Sealing principle   | Soft   |
| Mounting position   | Any  |
| Manual override   | None   |
| Type of control   | Direct   |
| Flow direction  | Reversible with restrictions                                       |
| Symbol  | 00992935   |
| Lap   | Overlap  |
| Pilot pressure  | 1.5 bar ... 10 bar   |
| Suitability for vacuum                                    | no   |
| Switching time off  | 9 ms   |
| On switching time   | 4 ms   |
| Operating medium  | Compressed air as per ISO 8573-1:2010 [7:4:4]                      |
| Information on operating and pilot media                  | Operation with oil lubrication possible (required for further use) |
| Corrosion resistance class (CRC)                          | 2 - Moderate corrosion stress                                      |
| LABS (PWIS) conformity                                    | VDMA24364-B1/B2-L  |
| Cleanroom suitability, measured according to ISO 14644-14 | Class 5 according to ISO 14644-1                                   |
| Temperature of medium                                     | -5 °C ... 50 °C  |
| Pilot medium  | Compressed air as per ISO 8573-1:2010 [7:4:4]                      |
| Ambient temperature                                       | -5 °C ... 60 °C  |
| Product weight  | 48 g   |
| Type of mounting  | On PR rail<br>With through-hole                                    |
| Pilot air port 12   | M5   |
| Pilot air port 14   | M5   |
| Pneumatic connection 1                                    | M7   |
| Pneumatic connection 2                                    | M7   |

| <b>Feature</b>         | <b>Value</b>   |
|------------------------|----------------|
| Pneumatic connection 3 | M7             |
| Pneumatic connection 4 | M7             |
| Pneumatic connection 5 | M7             |
| Note on materials      | RoHS-compliant |
| Seals material         | HNBR<br>NBR    |
| Housing material       | Anodized       |