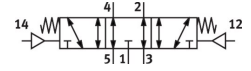


Pneumatic valve VUWG-L14-P53E-G18

Part number: 573835

FESTO



[PDF](#) General operating condition

Data sheet

| Feature | Value |
|---|--|
| Valve function | 5/3, exhausted |
| Actuation type | Pneumatic |
| Valve size | 14 mm |
| Normal nominal flow rate (normalized to DIN 1343) | 600 l/min |
| Pneumatic working port | G1/8 |
| Operating pressure | -0.9 bar ... 10 bar |
| Structural design | Piston gate valve |
| Reset method | Mechanical spring |
| Width dimension | 16 mm |
| Exhaust air function | With flow control option |
| Sealing principle | Soft |
| Mounting position | Any |
| Manual override | None |
| Type of control | Direct |
| Flow direction | Reversible |
| Symbol | 00991021 |
| Lap | Overlap |
| Pilot pressure | 3 bar ... 10 bar |
| Suitability for vacuum | yes |
| Switching time off | 30 ms |
| On switching time | 8 ms |
| Changeover time | 16 ms |
| Operating medium | Compressed air as per ISO 8573-1:2010 [7:4:4] |
| Information on operating and pilot media | Operation with oil lubrication possible (required for further use) |
| Corrosion resistance class (CRC) | 2 - Moderate corrosion stress |
| LABS (PWIS) conformity | VDMA24364-B1/B2-L |
| Cleanroom suitability, measured according to ISO 14644-14 | Class 5 according to ISO 14644-1 |
| Temperature of medium | -5 °C ... 50 °C |
| Pilot medium | Compressed air as per ISO 8573-1:2010 [7:4:4] |
| Ambient temperature | -5 °C ... 60 °C |
| Product weight | 81 g |
| Type of mounting | On PR rail With through-hole |
| Pilot air port 12 | M5 |
| Pilot air port 14 | M5 |
| Pneumatic connection 1 | G1/8 |

| Feature | Value |
|------------------------|----------------|
| Pneumatic connection 2 | G1/8 |
| Pneumatic connection 3 | G1/8 |
| Pneumatic connection 4 | G1/8 |
| Pneumatic connection 5 | G1/8 |
| Note on materials | RoHS-compliant |
| Seals material | HNBR NBR |
| Housing material | Anodized |