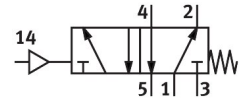


# Pneumatic valve VUWS-LT20-M52-M-G18

Part number: 577527

FESTO



[PDF](#) General operating condition

## Data sheet

Feature	Value
Valve function	5/2, monostable
Actuation type	Pneumatic
Valve size	21 mm
Normal nominal flow rate (normalized to DIN 1343)	500 l/min
Pneumatic working port	G1/8
Operating pressure	0.25 MPa ... 1 MPa
Operating pressure	2.5 bar ... 10 bar
Structural design	Plate seat
Reset method	Mechanical spring
Certification	c UL us - Recognized (OL)
Nominal width	5 mm
Exhaust air function	With flow control option
Sealing principle	Soft
Mounting position	Any
Manual override	None
Type of control	Direct
Pilot air supply port	Internal
Flow direction	Non-reversible
Symbol	00991001
Lap	Underlap
Pilot pressure MPa	0.25 MPa ... 1 MPa
Pilot pressure	2.5 bar ... 10 bar
Switching time off	14 ms
On switching time	10 ms
Explosion prevention and protection	Observe the information on the certificate Zone 1 (ATEX) Zone 2 (ATEX) Zone 21 (ATEX) Zone 22 (ATEX)
Operating medium	Compressed air as per ISO 8573-1:2010 [7:4:4]
Information on operating and pilot media	Operation with oil lubrication possible (required for further use)
Vibration resistance	Transport application test with severity level 2 as per FN 942017-4 and EN 60068-2-6
Shock resistance	Shock test with severity level 2 as per FN 942017-5 and EN 60068-2-27
Corrosion resistance class (CRC)	2 - Moderate corrosion stress
LABS (PWIS) conformity	VDMA24364-B1/B2-L
Cleanroom suitability, measured according to ISO 14644-14	Class 6 according to ISO 14644-1

Feature	Value
Temperature of medium	-10 °C ... 60 °C
Pilot medium	Compressed air as per ISO 8573-1:2010 [7:4:4]
Ambient temperature	-10 °C ... 60 °C
Product weight	155 g
Type of mounting	On terminal strip With through-hole
Venting hole connection	Not ducted
Pilot air port 14	M5
Pneumatic connection 1	G1/8
Pneumatic connection 2	G1/8
Pneumatic connection 3	G1/8
Pneumatic connection 4	G1/8
Pneumatic connection 5	G1/8
Note on materials	RoHS-compliant
Seals material	HNBR NBR TPE-U(PU)
Housing material	Painted
Material of screws	Steel, galvanized